

Wilo-Yonos MAXO-Z



Wilo-Yonos MAXO-Z	3
Yonos MAXO-Z 25/0,5-7 PN 10	7
Yonos MAXO-Z 25/0,5-10 PN 10	12
Yonos MAXO-Z 30/0,5-7 PN 10	17
Yonos MAXO-Z 30/0,5-12 PN 10	22
Yonos MAXO-Z 32/0,5-16 PN 6/10	27
Yonos MAXO-Z 40/0,5-8 PN 6/10	31
Yonos MAXO-Z 40/0,5-12 PN 6/10	36
Yonos MAXO-Z 40/0,5-16 PN 6/10	41
Yonos MAXO-Z 50/0,5-9 PN 6/10	46
Yonos MAXO-Z 50/0,5-16 PN 6/10	50
Yonos MAXO-Z 65/0,5-12 PN 6/10	54
Yonos MAXO-Z 65/0,5-16 PN 6/10	58



The standard high-efficiency pump for domestic hot water circulation in large buildings.

The Wilo-Yonos MAXO-Z is any efficient solution for a high sanitary standard of domestic hot water circulation in commercial buildings. It offers complete transparency of the delivery head, speed and possible faults thanks to its LED display. The compact design and the Wilo-Plug for the electric connection simplify the installation. The green knob ensures an easy handling of the pump.



Recommended services



System Optimisation



Energy Solutions



Your advantages

- > High-efficiency pump for energy savings
- > LED display provides complete transparency of set delivery head, speed stage or possible errors
- > Easy replacement of uncontrolled standard pumps via compact design and electrical connection using the Wilo plug
- > Easy selection of control mode Δp -v, Δp -c and three-speed adjustment with the green button
- > Ensuring operational reliability through collective fault signal
- > Optional: Wilo-Connect module Yonos MAXO with additional intelligent functions for integration into the building management system



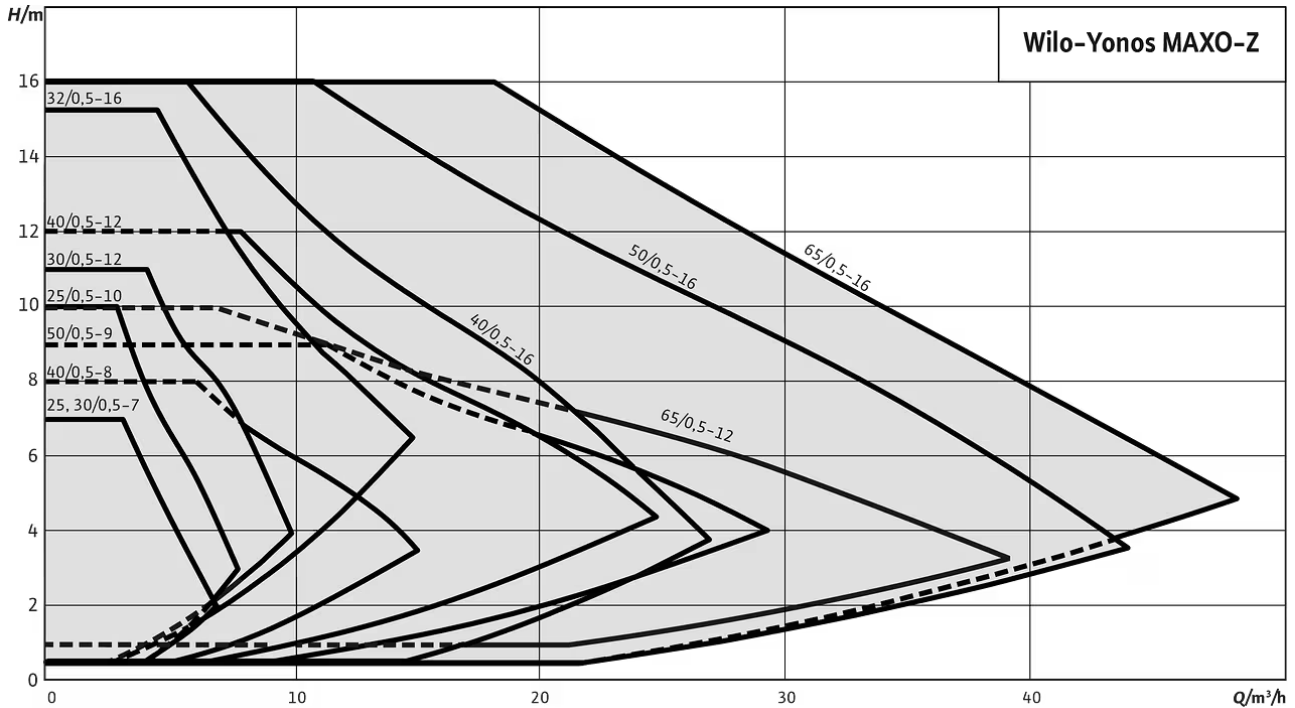
Product features

- 1 Hydraulics made of stainless steel
- 2 LED display
- 3 Three control modes can be set via the green button
- 4 Compact design
- 5 Collective fault signal
- 6 Electrical connection with Wilo plug

Eco-friendly features

- > High-efficiency pump with automatic power adjustment
- > Comprehensive range of spare parts for easy repair
- > Sustainable and carbon-neutral production and processes in our European factories





Design type

Glandless circulator with threaded connection or flange connection, EC motor with automatic power adjustment.

Application

Domestic hot water circulation systems in industry and building services.

Equipment/function

Operating modes

- > Δp-c for constant differential pressure
- > Δp-v for variable differential pressure
- > n = constant (3 speed stages)

Manual functions

- > Setting the operating mode
- > Setting of pump output (delivery head)
- > Setting the speed stages

Automatic functions

- > Infinitely variable power adjustment according to the operating mode
- > Deblocking function
- > Soft start
- > Integrated full motor protection

Signal and display functions

- > Collective fault signal (potential-free NC contact)
- > Fault signal light
- > LED segment display for displaying the delivery head and error codes
- > Display of the configured speed stage (C1, C2 or C3)

Equipment

- > Wrench attachment point on pump body (for threaded pipe union pumps)
- > Quick electrical connection with Wilco plug. For the connection of the mains and SSM lines, with integrated strain relief
- > For flange-end pumps: Flange versions
 - > Standard version for DN 40 to DN 65 pumps: Combination flange PN 6/10 for counter flanges PN 6 and PN 10

Typekey

Example:	Wilco-Yonos MAXO-Z 30/0.5-12
Yonos MAXO	High-efficiency pump (screw-end or flange-end pump), electronically controlled
Z	Single pump for domestic hot water circulation
30/	Nominal connection diameter
0,5-12	Nominal delivery head range [m]

Technical data

- > Permissible temperature range drinking water up to 3.57 mmol/l (20 °dH): 0 °C to +80 °C
- > Mains connection 1~230 V, 50/60 Hz
- > IP rating IPX4D
- > Screwed connection or flange connection (depending on type) Rp 1 to DN 65
- > Max. operating pressure of standard version: 6/10 bar or 6 bar (special version: 10 bar)

Materials

- > Pump housing made of stainless steel
- > Shaft: Stainless steel
- > Bearing: Carbon, synthetic resin-impregnated
- > Impeller: Plastic

Accessories

- > Screwed connections for threaded connection
- > Thermal insulation

Scope of delivery

- > Pump
- > Gaskets for threaded connection
- > Washers for flange screws (for nominal connection diameters DN 32 – DN 65)
- > Installation and operating instructions

Product list

Product description	Pump connection	EEI *	Port-to-port length <i>L0</i>	Maximum operating pressure <i>PN</i>	Mains connection	Gross weight, approx. <i>m</i>	Pieces per pallet	Article number
Yonos MAXO-Z 25/0,5-7 PN 10	G 1½	≤0,20	180 mm	10 bar	1-230 V, 50/60 Hz	5 kg	32	2175538
Yonos MAXO-Z 25/0,5-10 PN 10	G 1½	≤0,20	180 mm	10 bar	1-230 V, 50/60 Hz	5 kg	32	2175539
Yonos MAXO-Z 30/0,5-7 PN 10	G 2	≤0,20	180 mm	10 bar	1-230 V, 50/60 Hz	5,3 kg	32	2175540
Yonos MAXO-Z 30/0,5-12 PN 10	G 2	≤0,20	180 mm	10 bar	1-230 V, 50/60 Hz	5,3 kg	32	2175541
Yonos MAXO-Z 32/0,5-16 PN 6/10	DN 32	≤0,20	220 mm	10 bar	1-230 V, 50/60 Hz	22 kg	8	2219220
Yonos MAXO-Z 40/0,5-8 PN 6/10	DN 40	≤0,20	220 mm	10 bar	1-230 V, 50/60 Hz	13 kg	32	2175542
Yonos MAXO-Z 40/0,5-12 PN 6/10	DN 40	≤0,20	250 mm	10 bar	1-230 V, 50/60 Hz	18,4 kg	8	2175543
Yonos MAXO-Z 40/0,5-16 PN 6/10	DN 40	≤0,20	250 mm	10 bar	1-230 V, 50/60 Hz	24,5 kg	8	2219221
Yonos MAXO-Z 50/0,5-9 PN 6/10	DN 50	≤0,20	280 mm	10 bar	1-230 V, 50/60 Hz	19,8 kg	8	2175544
Yonos MAXO-Z 50/0,5-16 PN 6/10	DN 50	≤0,20	340 mm	10 bar	1-230 V, 50/60 Hz	28,5 kg	8	2219222
Yonos MAXO-Z 65/0,5-12 PN 6/10	DN 65	≤0,20	340 mm	10 bar	1-230 V, 50/60 Hz	33,8 kg	8	2175545
Yonos MAXO-Z 65/0,5-16 PN 6/10	DN 65	≤0,20	340 mm	10 bar	1-230 V, 50/60 Hz	31 kg	8	2219223

* The benchmark for the most efficient circulators is $EEI \leq 0.20$



Data sheet

Hydraulic data

Maximum operating pressure P_N	10 bar
Min. fluid temperature for HVAC applications T_{min}	0 °C
Max. fluid temperature for HVAC T	80 °C
Min. ambient temperature T_{min}	0 °C
Max. ambient temperature T_{max}	40 °C
Max. permitted total water hardness	3.57 mmol/l (20°dH)

Motor data

Energy efficiency index (EEI) *	≤0,20
Mains connection	1~230 V, 50/60 Hz
Rated power P_2	0,09 kW
Rated current I_N	1 A
Min. speed n_{min}	1000 1/min
Max. speed n_{max}	3700 1/min
Power consumption $P_{1 min}$	5 W
Power consumption $P_{1 max}$	120 W
Emitted interference	EN 61800-3;2004+A1;2012 /residential area (C1)
Interference resistance	EN 61800-3;2004+A1;2012 /industrial environment (C2)
Speed control	Frequency converter
Insulation class	F
Protection class motor	IPX4D
Motor protection	Internal protection overheating and overcurrent

* The benchmark for the most efficient circulators is EEI ≤ 0.20

Materials

Pump housing	Stainless steel
Impeller	PPS-GF40
Shaft	Stainless steel
Bearing	Carbon, synthetic resin-impregnated

Installation dimensions

Pipe connection on the suction side <i>DN_s</i>	G 1½
Pipe connection on the discharge side <i>DN_d</i>	G 1½
Port-to-port length <i>L₀</i>	180 mm

Equipment/function

Function

Control mode	Δp -v for variable differential pressure
	Δp -c for constant differential pressure
	Constant speed (3 speed stages)
Multi pump operation	Main/Standby (with Connect Module Yonos MAXO)
Display	Setpoint

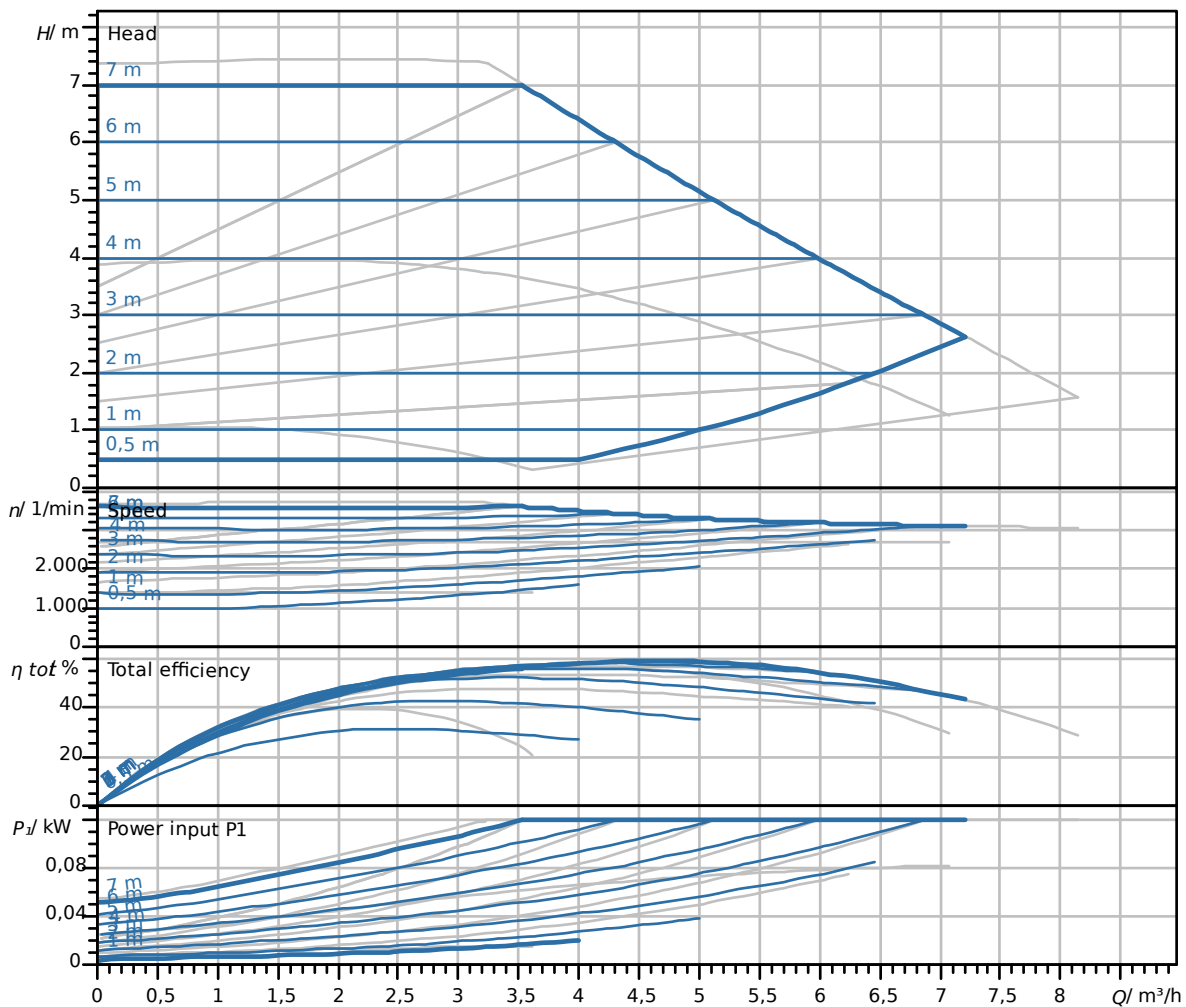
Equipment

Approvals and labels	CE
	VDE
	EAC
Display	LED segment display
Display information	Basic Version: LED display (small) for showing the set head or speed stage.
Pump control	Electronic-controlled pump
Quick electrical connection	Wilo plug

Connectivity

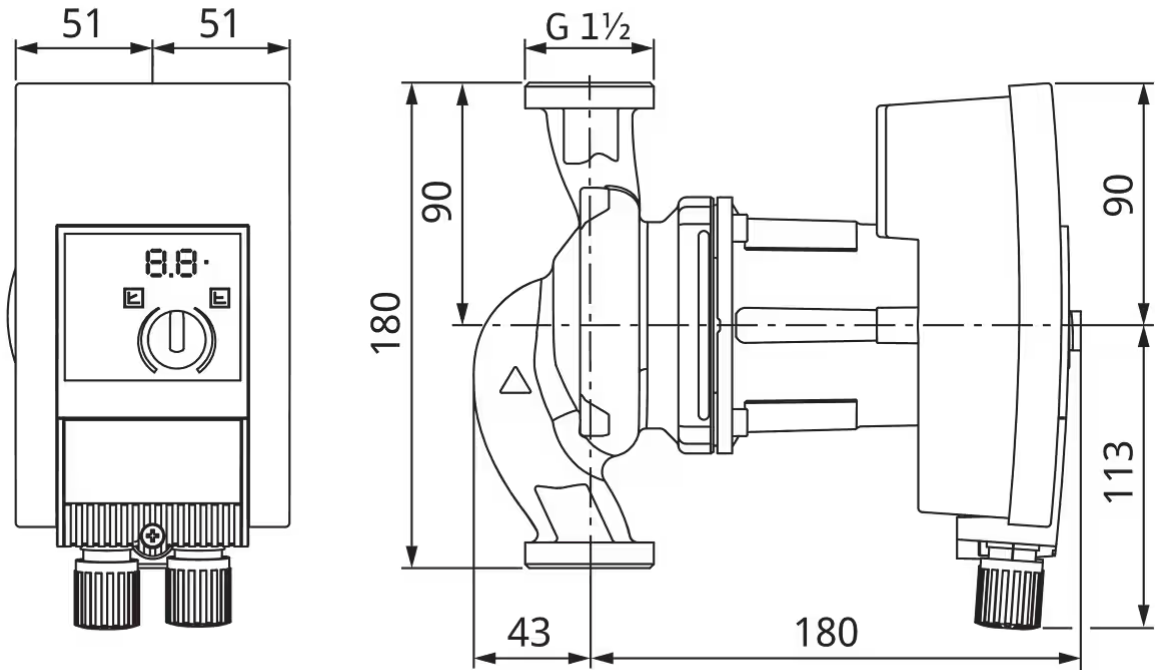
Digital input	Ext. OFF (via accessories Wilo-Connect module Yonos MAXO)
Digital output	SSM
	SSM/SBM (via accessories Connect module Yonos MAXO)

Pump curves



Dimensions and dimensions drawings

Yonos MAXO-Z 25/0,5-7 PN 10



Mechanical accessories

Pipe installation

Screwed connections/adapters

Screwed connection R 1/∅ 28 i x G 1½, 1 Set	112047195	EUR 30.90
Screwed connection R 1/∅ 28 i x G 1½, 24 Set	112047596	EUR 735.-
Adapter G 1½/G 2	4105914	EUR 33.-

Pipe installation, adapter fitting

Threaded adapter R

Threaded adapter R 5, MS	110678298	EUR 71.-
Threaded adapter R 12, MS	110788294	EUR 47.40

Thermal insulation

Thermal insulation shell Yonos MAXO(-Z)

Thermal insulation shell Yonos MAXO(-Z) 25(30)/0,5-7(10)	2123369	EUR 18.60
--	---------	-----------

Electrical accessories

Pump control/interface module

Connect module Yonos MAXO

Wilo-Connect module Yonos MAXO	2210108	EUR 199.-
--------------------------------	---------	-----------



Data sheet

Hydraulic data

Maximum operating pressure P_N	10 bar
Min. fluid temperature for HVAC applications T_{min}	0 °C
Max. fluid temperature for HVAC T	80 °C
Min. ambient temperature T_{min}	0 °C
Max. ambient temperature T_{max}	40 °C
Max. permitted total water hardness	3.57 mmol/l (20°dH)

Motor data

Energy efficiency index (EEI) *	≤0,20
Mains connection	1~230 V, 50/60 Hz
Rated power P_2	0,15 kW
Rated current I_N	1,5 A
Min. speed n_{min}	1000 1/min
Max. speed n_{max}	4450 1/min
Power consumption $P_{1 min}$	5 W
Power consumption $P_{1 max}$	190 W
Emitted interference	EN 61800-3;2004+A1;2012 /residential area (C1)
Interference resistance	EN 61800-3;2004+A1;2012 /industrial environment (C2)
Speed control	Frequency converter
Insulation class	F
Protection class motor	IPX4D
Motor protection	Internal protection overheating and overcurrent

* The benchmark for the most efficient circulators is EEI ≤ 0.20

Materials

Pump housing	Stainless steel
Impeller	PPS-GF40
Shaft	Stainless steel
Bearing	Carbon, synthetic resin-impregnated

Installation dimensions

Pipe connection on the suction side <i>DN_s</i>	G 1½
Pipe connection on the discharge side <i>DN_d</i>	G 1½
Port-to-port length <i>L₀</i>	180 mm

Equipment/function

Function

Control mode	Δp -v for variable differential pressure
	Δp -c for constant differential pressure
	Constant speed (3 speed stages)
Multi pump operation	Main/Standby (with Connect Module Yonos MAXO)
Display	Setpoint

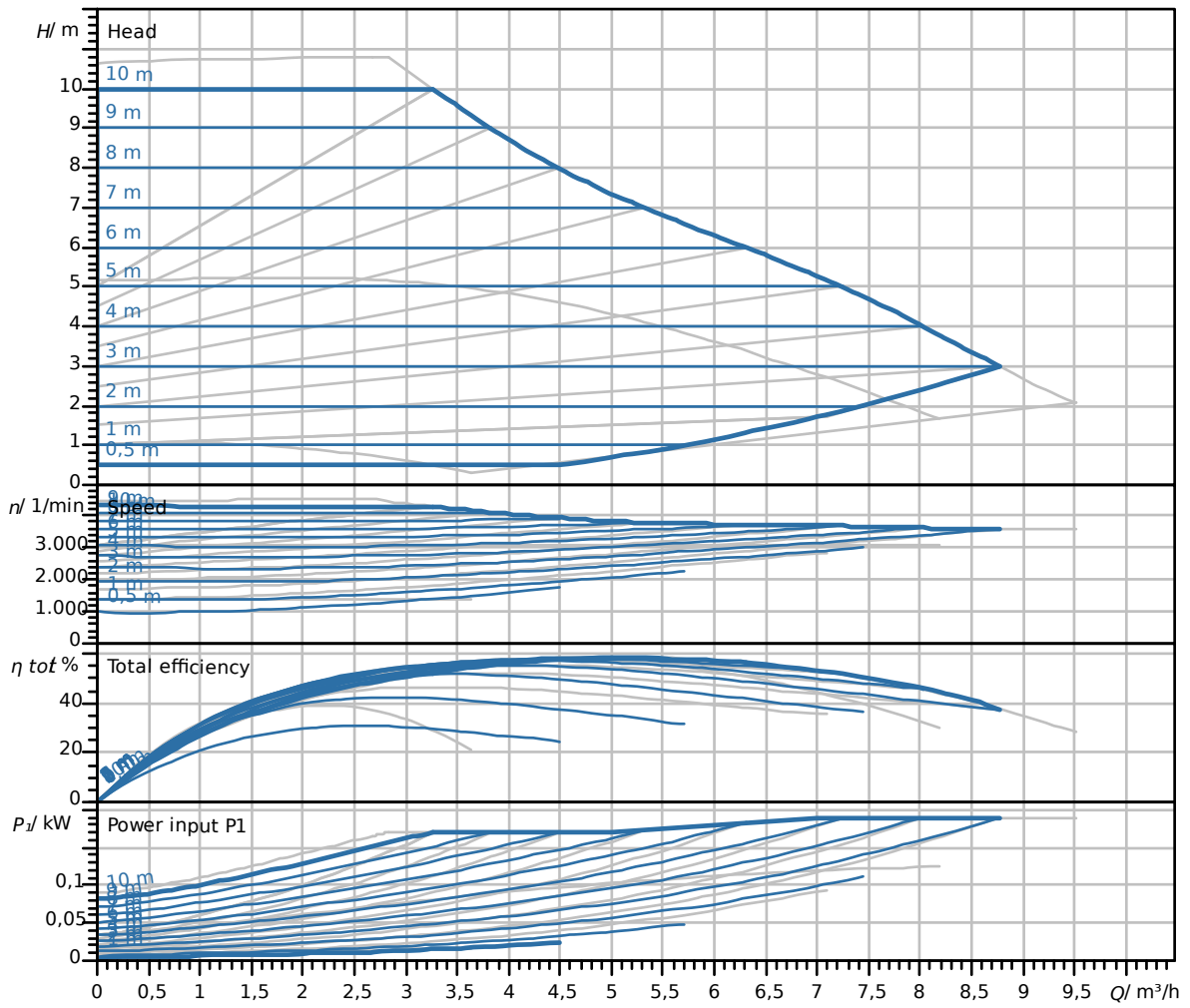
Equipment

Approvals and labels	CE
	VDE
	EAC
Display	LED segment display
Display information	Basic Version: LED display (small) for showing the set head or speed stage.
Pump control	Electronic-controlled pump
Quick electrical connection	Wilo plug

Connectivity

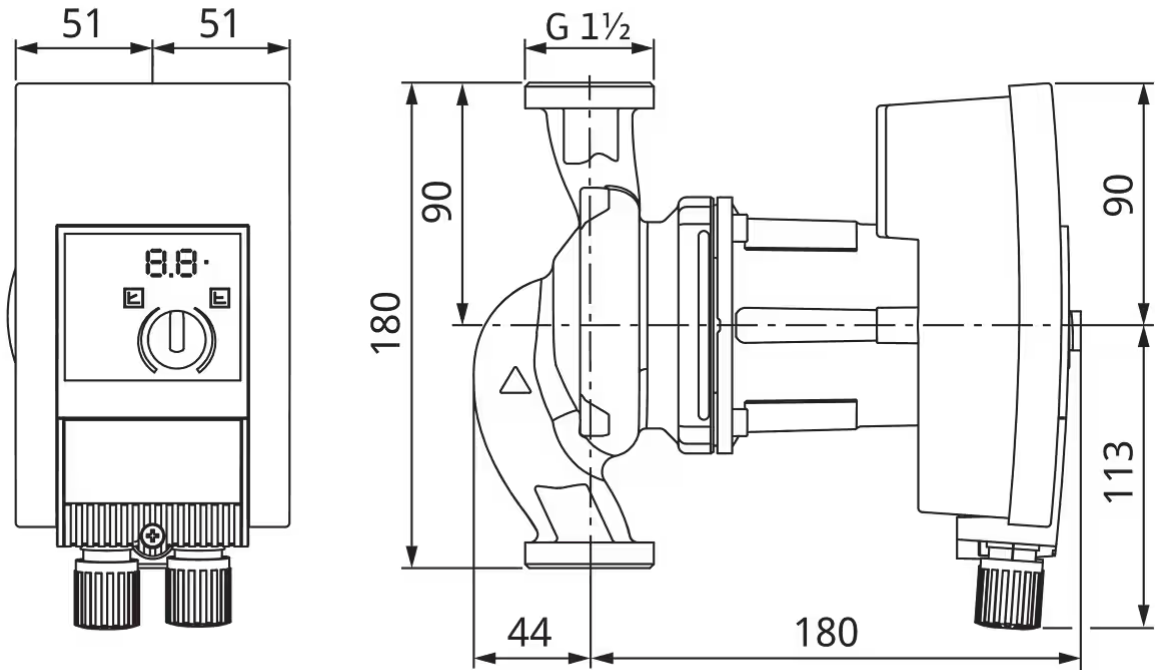
Digital input	Ext. OFF (via accessories Wilo-Connect module Yonos MAXO)
Digital output	SSM
	SSM/SBM (via accessories Connect module Yonos MAXO)

Pump curves



Dimensions and dimensions drawings

Yonos MAXO-Z 25/0,5-10 PN 10



Mechanical accessories

Pipe installation

Screwed connections/adapters

Screwed connection R 1/∅ 28 i x G 1½, 1 Set	112047195	EUR 30.90
Screwed connection R 1/∅ 28 i x G 1½, 24 Set	112047596	EUR 735.-
Adapter G 1½/G 2	4105914	EUR 33.-

Pipe installation, adapter fitting

Threaded adapter R

Threaded adapter R 5, MS	110678298	EUR 71.-
Threaded adapter R 12, MS	110788294	EUR 47.40

Thermal insulation

Thermal insulation shell Yonos MAXO(-Z)

Thermal insulation shell Yonos MAXO(-Z) 25(30)/0,5-7(10)	2123369	EUR 18.60
--	---------	-----------

Electrical accessories

Pump control/interface module

Connect module Yonos MAXO

Wilo-Connect module Yonos MAXO	2210108	EUR 199.-
--------------------------------	---------	-----------



Data sheet

Hydraulic data

Maximum operating pressure P_N	10 bar
Min. fluid temperature for HVAC applications T_{min}	0 °C
Max. fluid temperature for HVAC T	80 °C
Min. ambient temperature T_{min}	0 °C
Max. ambient temperature T_{max}	40 °C
Max. permitted total water hardness	3.57 mmol/l (20°dH)

Motor data

Energy efficiency index (EEI) *	≤0,20
Mains connection	1~230 V, 50/60 Hz
Rated power P_2	0,09 kW
Rated current I_N	1 A
Min. speed n_{min}	1000 1/min
Max. speed n_{max}	3700 1/min
Power consumption $P_{1 min}$	5 W
Power consumption $P_{1 max}$	120 W
Emitted interference	EN 61800-3;2004+A1;2012 /residential area (C1)
Interference resistance	EN 61800-3;2004+A1;2012 /industrial environment (C2)
Speed control	Frequency converter
Insulation class	F
Protection class motor	IPX4D
Motor protection	Internal protection overheating and overcurrent

* The benchmark for the most efficient circulators is EEI ≤ 0.20

Materials

Pump housing	Stainless steel
Impeller	PPS-GF40
Shaft	Stainless steel
Bearing	Carbon, synthetic resin-impregnated

Installation dimensions

Pipe connection on the suction side <i>DN_s</i>	G 2
Pipe connection on the discharge side <i>DN_d</i>	G 2
Port-to-port length <i>L₀</i>	180 mm

Equipment/function

Function

Control mode	Δp -v for variable differential pressure
	Δp -c for constant differential pressure
	Constant speed (3 speed stages)
Multi pump operation	Main/Standby (with Connect Module Yonos MAXO)
Display	Setpoint

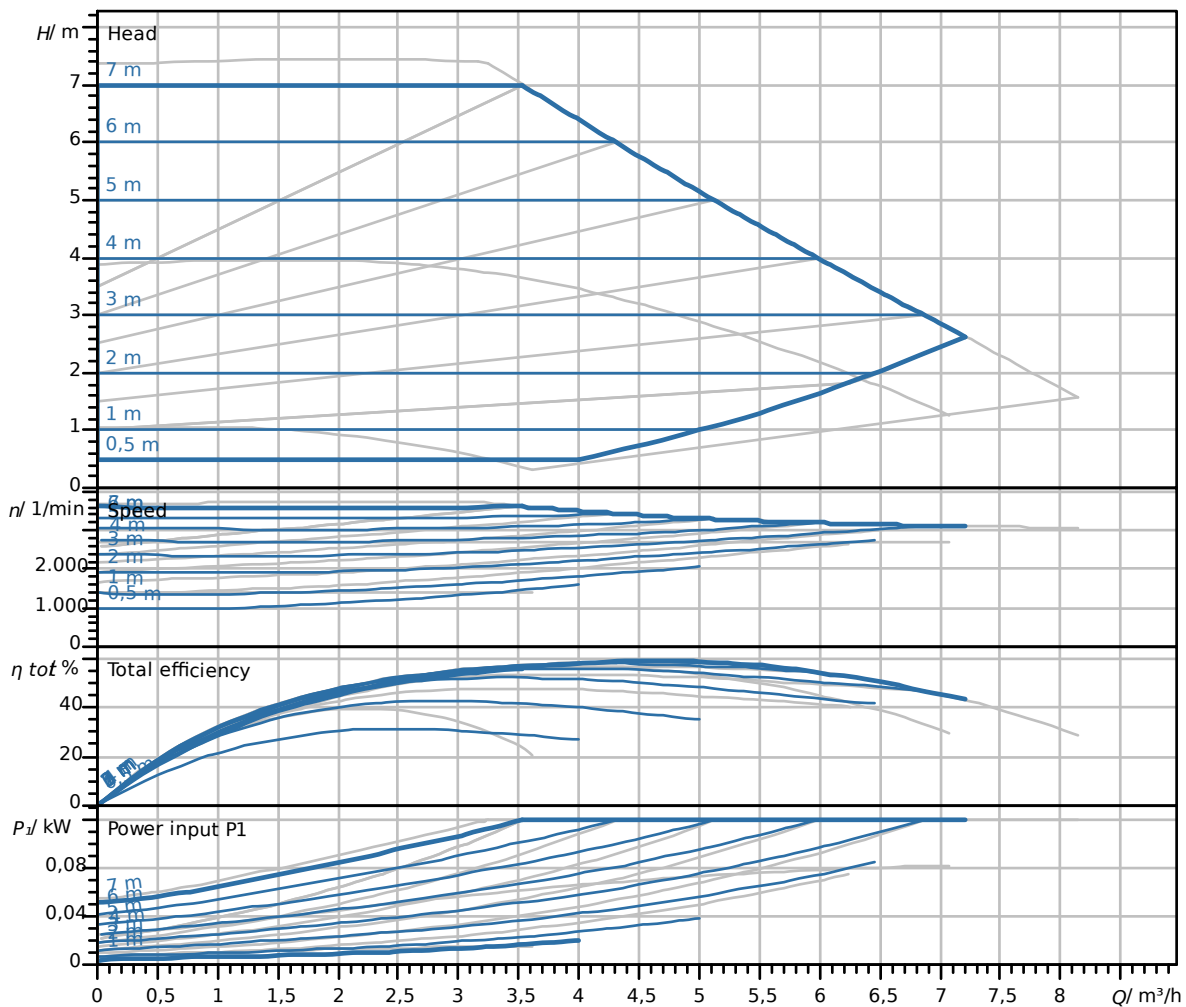
Equipment

Approvals and labels	CE
	VDE
	EAC
Display	LED segment display
Display information	Basic Version: LED display (small) for showing the set head or speed stage.
Pump control	Electronic-controlled pump
Quick electrical connection	Wilo plug

Connectivity

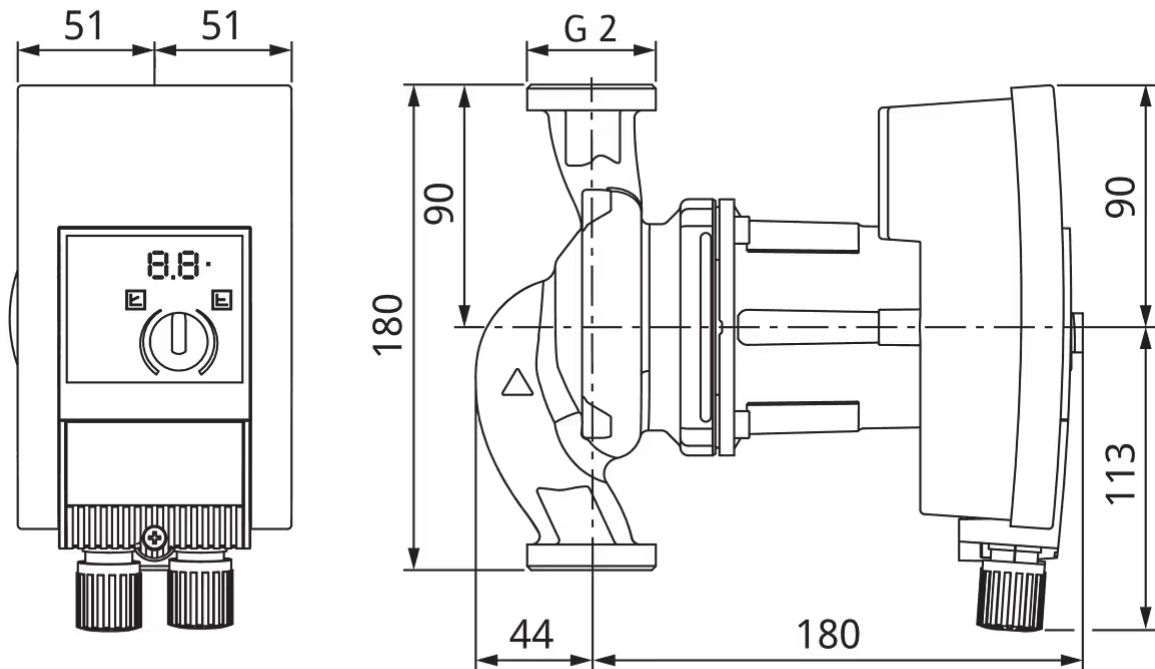
Digital input	Ext. OFF (via accessories Wilo-Connect module Yonos MAXO)
Digital output	SSM
	SSM/SBM (via accessories Connect module Yonos MAXO)

Pump curves



Dimensions and dimensions drawings

Yonos MAXO-Z 30/0,5-7 PN 10



Mechanical accessories

Pipe installation

Screwed connections/adapters

Screwed connection R 1¼/∅ 35 i x G 2, 1 Set	112082691	EUR 48.50
Screwed connection R 1¼/∅ 35 i x G 2, 24 Set	112082794	EUR 916.-

Pipe installation, adapter fitting

Threaded adapter R

Threaded adapter R 22, MS	110680092	EUR 101.-
---------------------------	-----------	-----------

Thermal insulation

Thermal insulation shell Yonos MAXO(-Z)

Thermal insulation shell Yonos MAXO(-Z) 25(30)/0,5-7(10)	2123369	EUR 18.60
--	---------	-----------

Electrical accessories

Pump control/interface module

Connect module Yonos MAXO

Wilo-Connect module Yonos MAXO	2210108	EUR 199,-
--------------------------------	---------	-----------



Data sheet

Hydraulic data

Maximum operating pressure P_N	10 bar
Min. fluid temperature for HVAC applications T_{min}	0 °C
Max. fluid temperature for HVAC T	80 °C
Min. ambient temperature T_{min}	0 °C
Max. ambient temperature T_{max}	40 °C
Max. permitted total water hardness	3.57 mmol/l (20°dH)

Motor data

Energy efficiency index (EEI) *	≤0,20
Mains connection	1~230 V, 50/60 Hz
Rated power P_2	0,23 kW
Rated current I_N	1,33 A
Min. speed n_{min}	1000 1/min
Max. speed n_{max}	4800 1/min
Power consumption $P_{1 min}$	10 W
Power consumption $P_{1 max}$	305 W
Emitted interference	EN 61800-3;2004+A1;2012 /residential area (C1)
Interference resistance	EN 61800-3;2004+A1;2012 /industrial environment (C2)
Speed control	Frequency converter
Insulation class	F
Protection class motor	IPX4D
Motor protection	Internal protection overheating and overcurrent

* The benchmark for the most efficient circulators is EEI ≤ 0.20

Materials

Pump housing	Stainless steel
Impeller	PPS-GF40
Shaft	Stainless steel
Bearing	Carbon, synthetic resin-impregnated

Installation dimensions

Pipe connection on the suction side <i>DN_s</i>	G 2
Pipe connection on the discharge side <i>DN_d</i>	G 2
Port-to-port length <i>L₀</i>	180 mm

Equipment/function

Function

Control mode	Δp -v for variable differential pressure
	Δp -c for constant differential pressure
	Constant speed (3 speed stages)
Multi pump operation	Main/Standby (with Connect Module Yonos MAXO)
Display	Setpoint

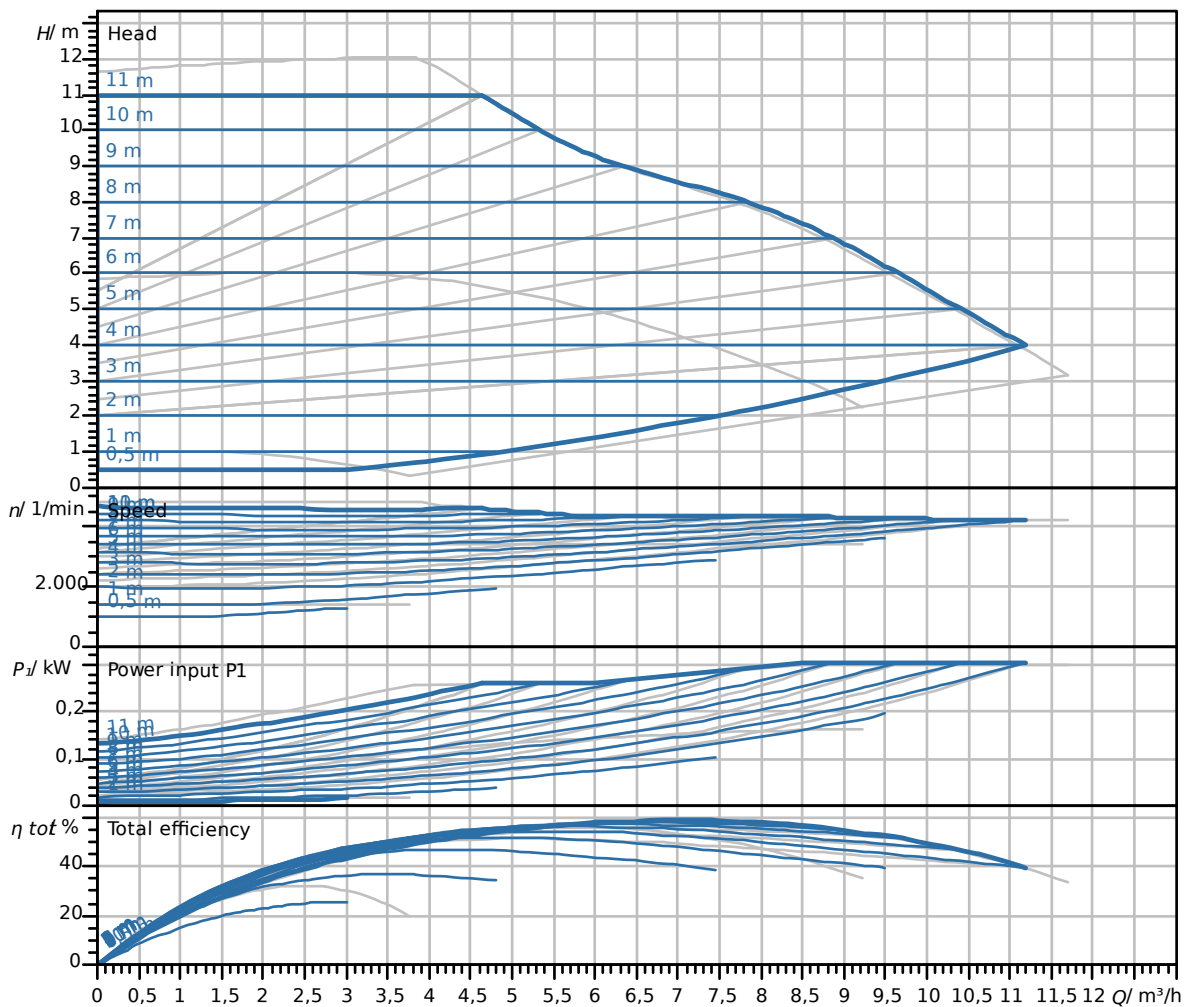
Equipment

Approvals and labels	CE
	VDE
	EAC
Display	LED segment display
Display information	Basic Version: LED display (small) for showing the set head or speed stage.
Pump control	Electronic-controlled pump
Quick electrical connection	Wilo plug

Connectivity

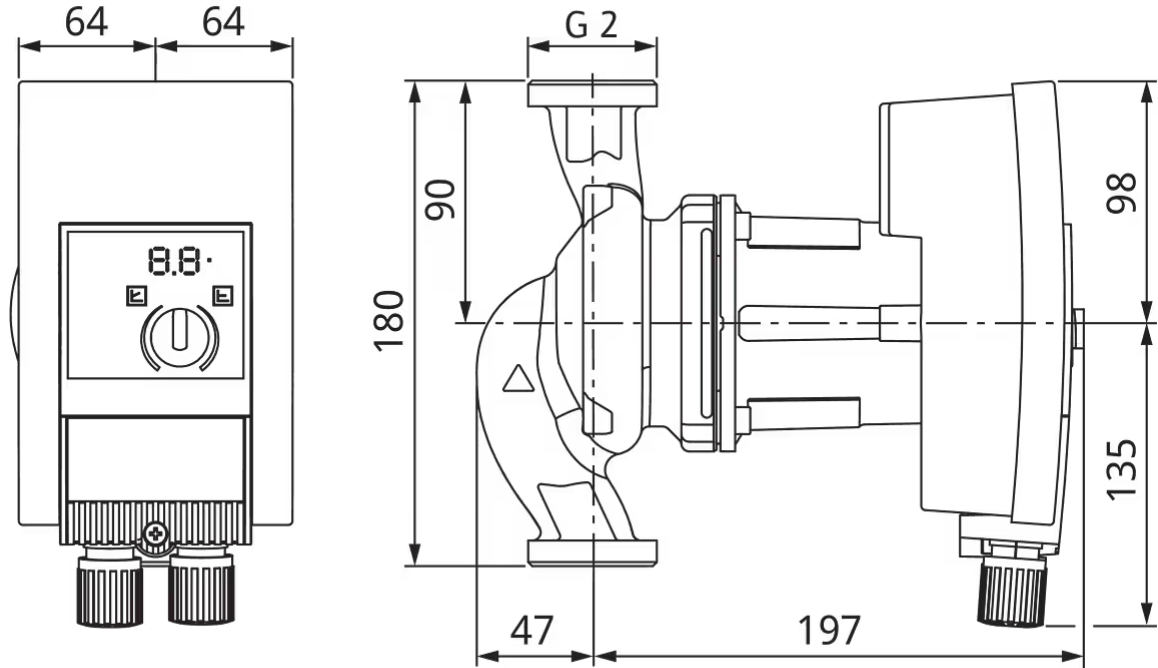
Digital input	Ext. OFF (via accessories Wilo-Connect module Yonos MAXO)
Digital output	SSM
	SSM/SBM (via accessories Connect module Yonos MAXO)

Pump curves



Dimensions and dimensions drawings

Yonos MAXO-Z 30/0,5-12 PN 10



Mechanical accessories

Pipe installation

Screwed connections/adapters

Screwed connection R 1¼/∅ 35 i x G 2, 1 Set	112082691	EUR 48.50
Screwed connection R 1¼/∅ 35 i x G 2, 24 Set	112082794	EUR 916.-

Pipe installation, adapter fitting

Threaded adapter R

Threaded adapter R 22, MS	110680092	EUR 101.-
---------------------------	-----------	-----------

Thermal insulation

Thermal insulation shell Yonos MAXO(-Z)

Thermal insulation shell Yonos MAXO(-Z) 25(30)/0,5 - 12	2123370	EUR 18.60
---	---------	-----------

Electrical accessories

Pump control/interface module

Connect module Yonos MAXO

Wilo-Connect module Yonos MAXO	2210108	EUR 199,-
--------------------------------	---------	-----------



Data sheet

Hydraulic data

Maximum operating pressure P_N	10 bar
Min. fluid temperature for HVAC applications T_{min}	0 °C
Max. fluid temperature for HVAC T	80 °C
Min. ambient temperature T_{min}	0 °C
Max. ambient temperature T_{max}	40 °C
Max. permitted total water hardness	3.57 mmol/l (20°dH)

Motor data

Energy efficiency index (EEI) *	≤0,20
Mains connection	1~230 V, 50/60 Hz
Rated power P_2	0,43 kW
Rated current I_N	2,23 A
Min. speed n_{min}	650 1/min
Max. speed n_{max}	4950 1/min
Power consumption $P_{1 min}$	10 W
Power consumption $P_{1 max}$	510 W
Emitted interference	EN 61800-3;2004+A1;2012 /residential area (C1)
Interference resistance	EN 61800-3;2004+A1;2012 /industrial environment (C2)
Speed control	Frequency converter
Insulation class	F
Protection class motor	IPX4D
Motor protection	Internal protection overheating and overcurrent

* The benchmark for the most efficient circulators is EEI ≤ 0.20

Materials

Pump housing	Stainless steel
Impeller	PPS-GF40
Shaft	Stainless steel
Bearing	Carbon, synthetic resin-impregnated

Installation dimensions

Pipe connection on the suction side <i>DN_s</i>	DN 32
Pipe connection on the discharge side <i>DN_d</i>	DN 32
Port-to-port length <i>L₀</i>	220 mm

Equipment/function

Function

Control mode	Δp -v for variable differential pressure
	Δp -c for constant differential pressure
	Constant speed (3 speed stages)
Multi pump operation	Main/Standby (with Connect Module Yonos MAXO)
Display	Setpoint

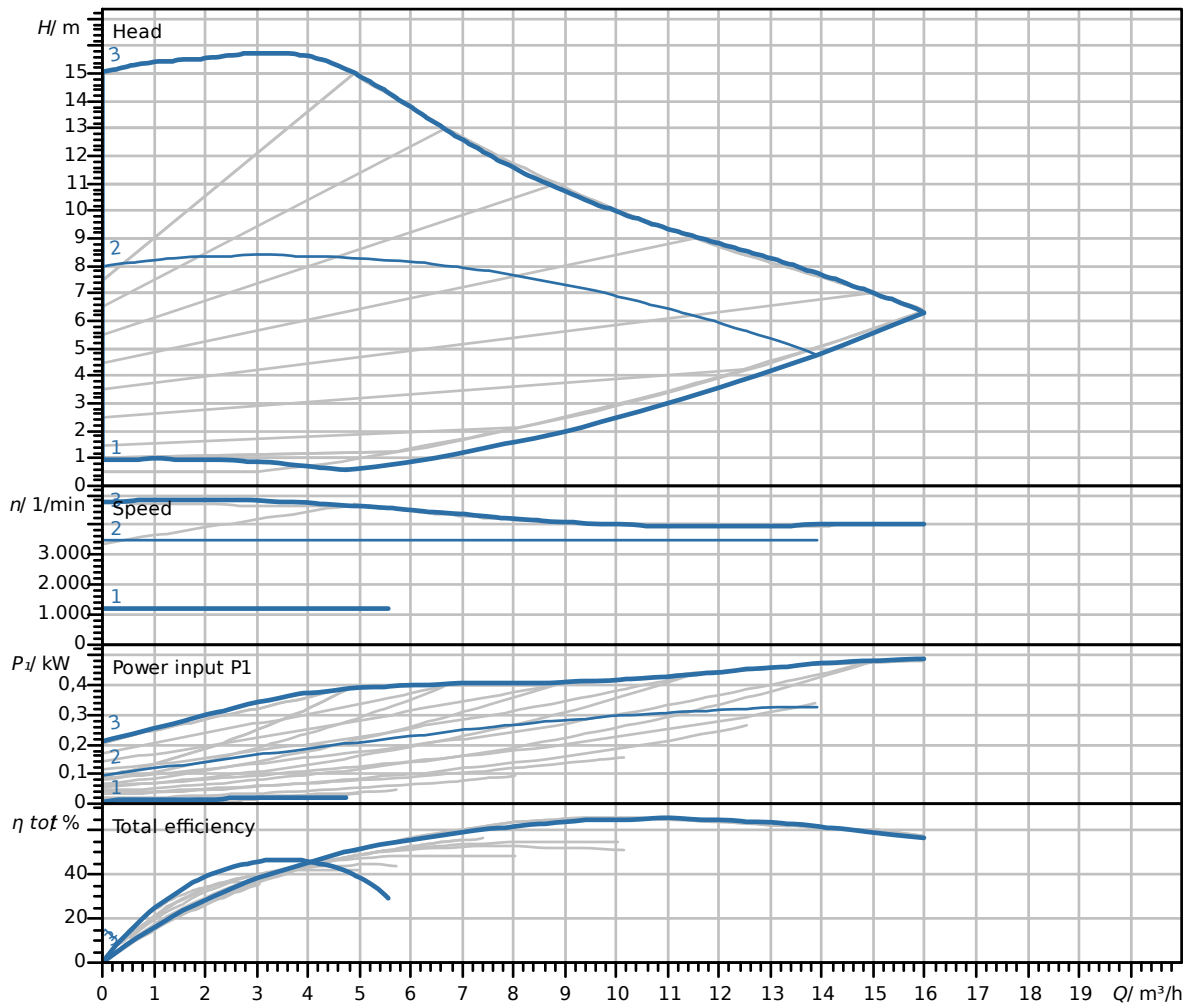
Equipment

Approvals and labels	CE
	VDE
	EAC
Display	LED segment display
Display information	Basic Version: LED display (small) for showing the set head or speed stage.
Pump control	Electronic-controlled pump
Quick electrical connection	Wilo plug

Connectivity

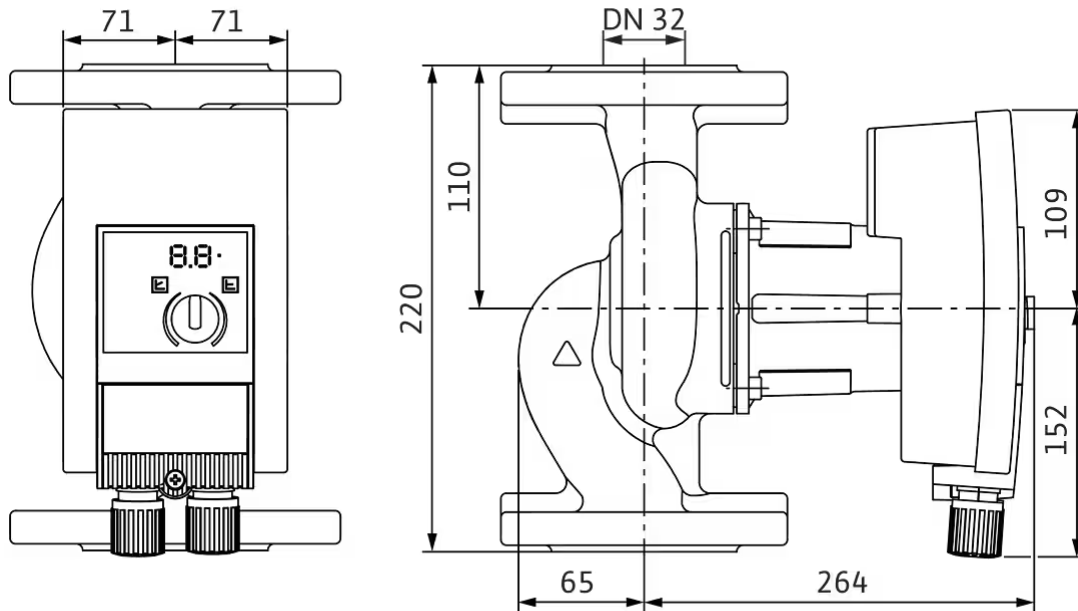
Digital input	Ext. OFF (via accessories Wilo-Connect module Yonos MAXO)
Digital output	SSM
	SSM/SBM (via accessories Connect module Yonos MAXO)

Pump curves



Dimensions and dimensions drawings

Yonos MAXO-Z 32/0,5-16 PN 6/10



Mechanical accessories

Pipe installation

Counter flange kit

DN 32, PN 6 counter flange kit	2105576	EUR 57.70
DN 32, PN 10 counter flange kit	2105577	EUR 77.-

Thermal insulation

Thermal insulation shell Yonos MAXO(-Z)

Thermal insulation shell Yonos MAXO-Z 32/0,5-16	2194871	EUR 22.-
---	---------	----------

Electrical accessories

Pump control/interface module

Connect module Yonos MAXO

Wilo-Connect module Yonos MAXO	2210108	EUR 199.-
--------------------------------	---------	-----------



Data sheet

Hydraulic data

Maximum operating pressure P_N	10 bar
Min. fluid temperature for HVAC applications T_{min}	0 °C
Max. fluid temperature for HVAC T	80 °C
Min. ambient temperature T_{min}	0 °C
Max. ambient temperature T_{max}	40 °C
Max. permitted total water hardness	3.57 mmol/l (20°dH)

Motor data

Energy efficiency index (EEI) *	≤0,20
Mains connection	1~230 V, 50/60 Hz
Rated power P_2	0,23 kW
Rated current I_N	1,33 A
Min. speed n_{min}	1200 1/min
Max. speed n_{max}	4800 1/min
Power consumption $P_{1 min}$	10 W
Power consumption $P_{1 max}$	305 W
Emitted interference	EN 61800-3;2004+A1;2012 /residential area (C1)
Interference resistance	EN 61800-3;2004+A1;2012 /industrial environment (C2)
Speed control	Frequency converter
Insulation class	F
Protection class motor	IPX4D
Motor protection	Internal protection overheating and overcurrent

* The benchmark for the most efficient circulators is EEI ≤ 0.20

Materials

Pump housing	Stainless steel
Impeller	PPS-GF40
Shaft	Stainless steel
Bearing	Carbon, synthetic resin-impregnated

Installation dimensions

Pipe connection on the suction side <i>DN_s</i>	DN 40
Pipe connection on the discharge side <i>DN_d</i>	DN 40
Port-to-port length <i>L₀</i>	220 mm

Equipment/function

Function

Control mode	Δp -v for variable differential pressure
	Δp -c for constant differential pressure
	Constant speed (3 speed stages)
Multi pump operation	Main/Standby (with Connect Module Yonos MAXO)
Display	Setpoint

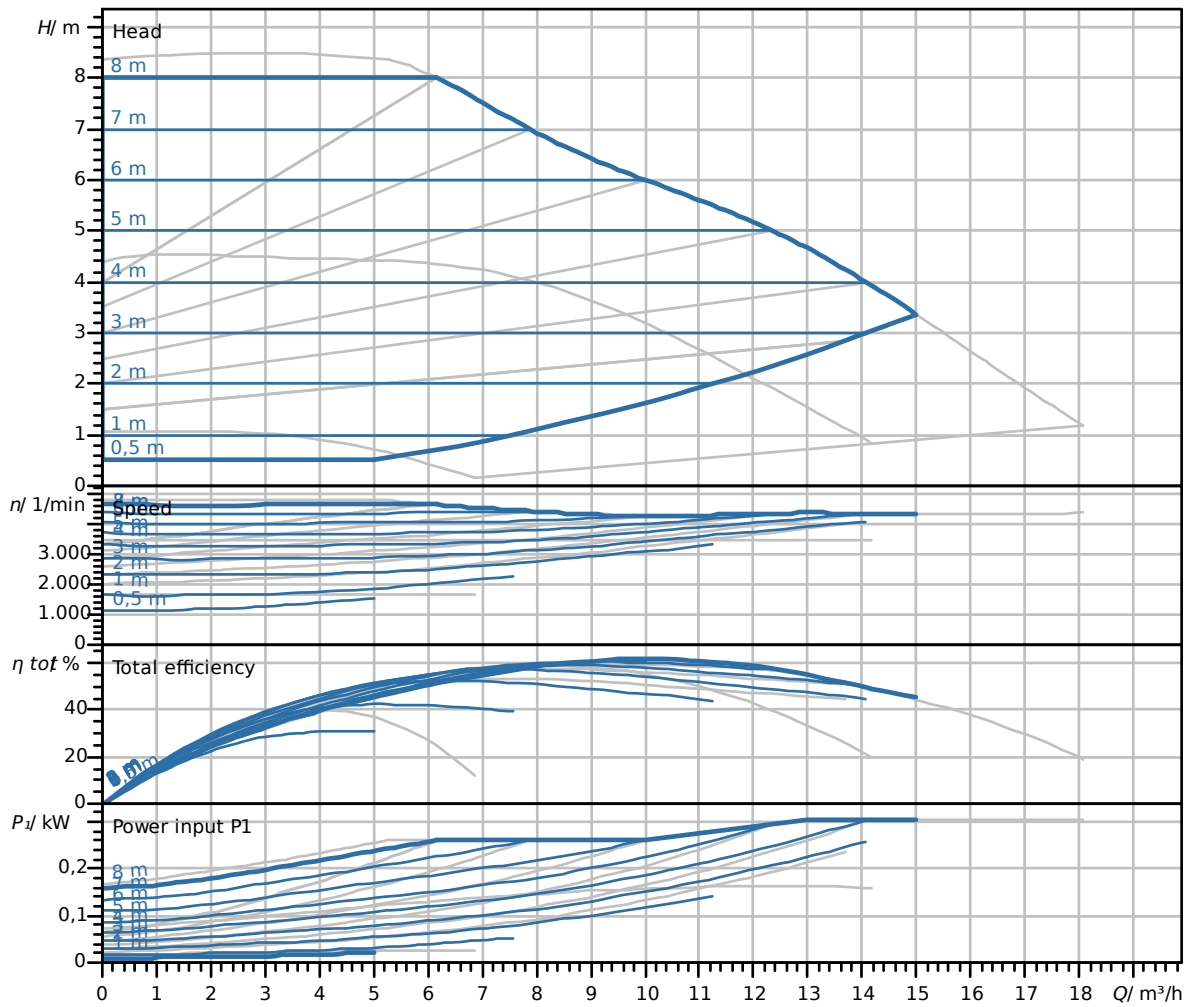
Equipment

Approvals and labels	CE
	VDE
	EAC
Display	LED segment display
Display information	Basic Version: LED display (small) for showing the set head or speed stage.
Pump control	Electronic-controlled pump
Quick electrical connection	Wilo plug

Connectivity

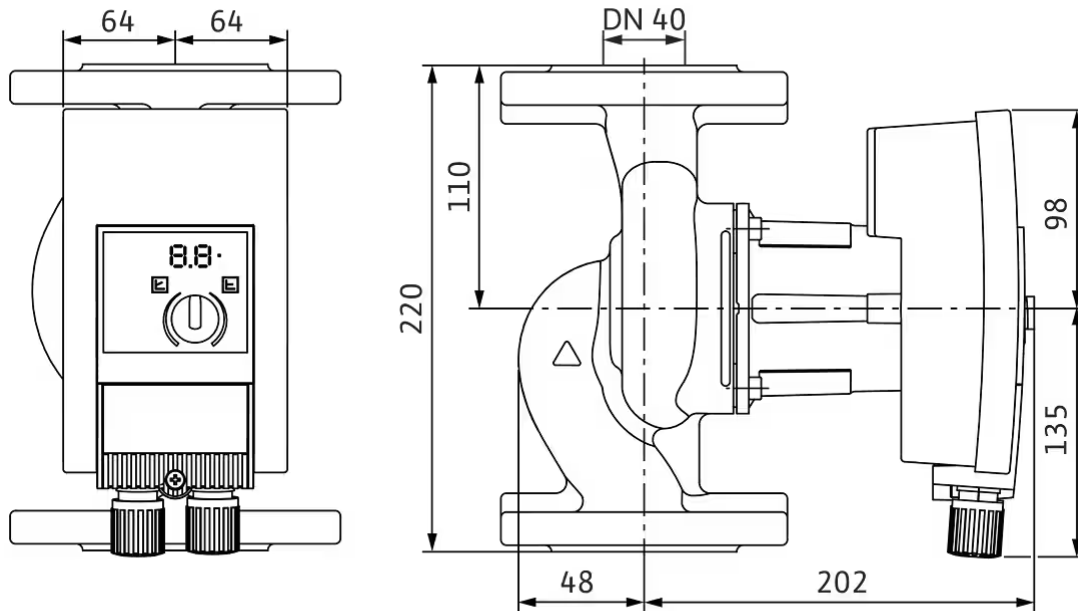
Digital input	Ext. OFF (via accessories Wilo-Connect module Yonos MAXO)
Digital output	SSM
	SSM/SBM (via accessories Connect module Yonos MAXO)

Pump curves



Dimensions and dimensions drawings

Yonos MAXO-Z 40/0,5-8 PN 6/10



Mechanical accessories

Pipe installation

Counter flange kit

DN 40, PN 6 counter flange kit	2105578	EUR 59.80
DN 40, PN 10 counter flange kit	2105579	EUR 74.-

Pipe installation, adapter fitting

Intermediate flange connecting piece F

Intermediate flange pieces F 1-MS, DN 40x30mm, PN 6	2060865	EUR 120.-
Intermediate flange pieces F 1-MS, DN 40x30mm, PN 10/16	2060920	EUR 160.-

Thermal insulation

Thermal insulation shell Yonos MAXO(-Z)

Thermal insulation shell Yonos MAXO(-Z) 40/0.5-8	2123372	EUR 19.60
--	---------	-----------

Electrical accessories

Pump control/interface module

Connect module Yonos MAXO

Wilo-Connect module Yonos MAXO	2210108	EUR 199,-
--------------------------------	---------	-----------



Data sheet

Hydraulic data

Maximum operating pressure P_N	10 bar
Min. fluid temperature for HVAC applications T_{min}	0 °C
Max. fluid temperature for HVAC T	80 °C
Min. ambient temperature T_{min}	0 °C
Max. ambient temperature T_{max}	40 °C
Max. permitted total water hardness	3.57 mmol/l (20°dH)

Motor data

Energy efficiency index (EEI) *	≤0,20
Mains connection	1~230 V, 50/60 Hz
Rated power P_2	0,45 kW
Rated current I_N	2,4 A
Min. speed n_{min}	950 1/min
Max. speed n_{max}	4600 1/min
Power consumption $P_{1 min}$	15 W
Power consumption $P_{1 max}$	550 W
Emitted interference	EN 61800-3;2004+A1;2012 /residential area (C1)
Interference resistance	EN 61800-3;2004+A1;2012 /industrial environment (C2)
Speed control	Frequency converter
Insulation class	F
Protection class motor	IPX4D
Motor protection	Internal protection overheating and overcurrent

* The benchmark for the most efficient circulators is EEI ≤ 0.20

Materials

Pump housing	Stainless steel
Impeller	PPS-GF40
Shaft	Stainless steel
Bearing	Carbon, synthetic resin-impregnated

Installation dimensions

Pipe connection on the suction side <i>DN_s</i>	DN 40
Pipe connection on the discharge side <i>DN_d</i>	DN 40
Port-to-port length <i>L₀</i>	250 mm

Equipment/function

Function

Control mode	Δp -v for variable differential pressure
	Δp -c for constant differential pressure
	Constant speed (3 speed stages)
Multi pump operation	Main/Standby (with Connect Module Yonos MAXO)
Display	Setpoint

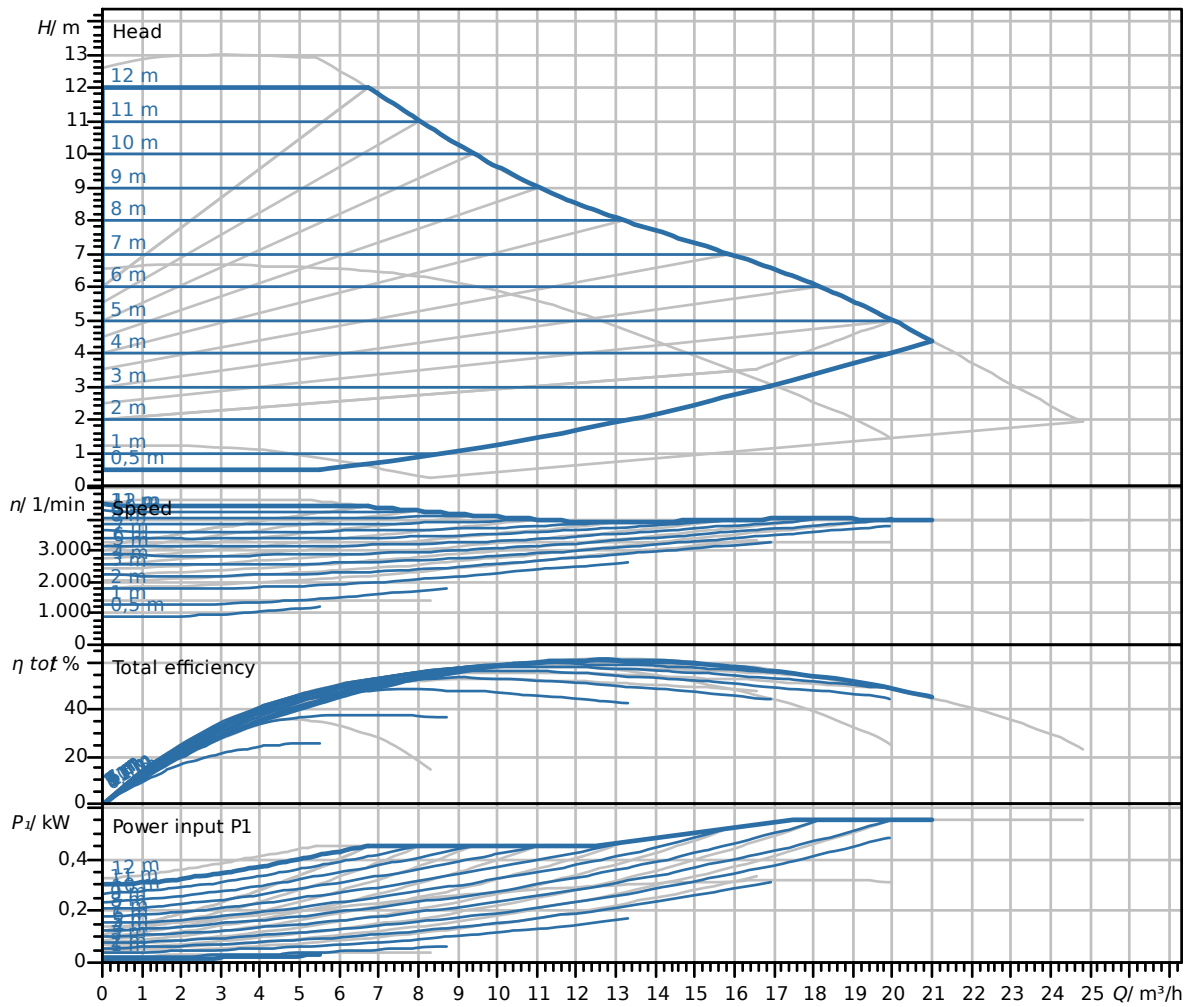
Equipment

Approvals and labels	CE
	VDE
	EAC
Display	LED segment display
Display information	Basic Version: LED display (small) for showing the set head or speed stage.
Pump control	Electronic-controlled pump
Quick electrical connection	Wilo plug

Connectivity

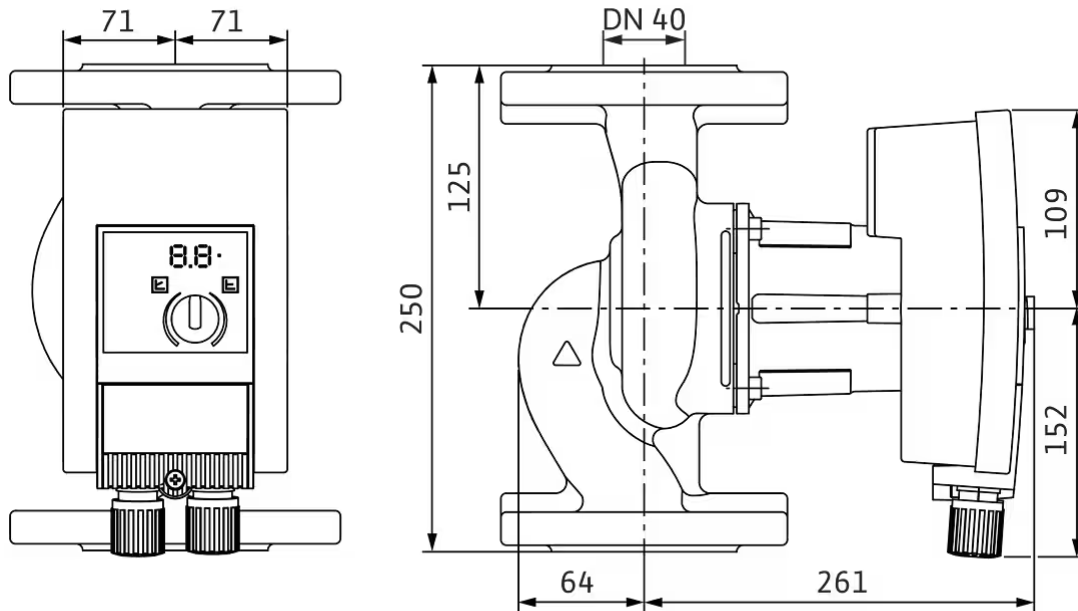
Digital input	Ext. OFF (via accessories Wilo-Connect module Yonos MAXO)
Digital output	SSM
	SSM/SBM (via accessories Connect module Yonos MAXO)

Pump curves



Dimensions and dimensions drawings

Yonos MAXO-Z 40/0,5-12 PN 6/10



Mechanical accessories

Pipe installation

Counter flange kit

DN 40, PN 6 counter flange kit	2105578	EUR 59.80
DN 40, PN 10 counter flange kit	2105579	EUR 74.-

Pipe installation, adapter fitting

Intermediate flange connecting piece F

Intermediate flange pieces F 1-MS, DN 40x30mm, PN 6	2060865	EUR 120.-
Intermediate flange pieces F 1-MS, DN 40x30mm, PN 10/16	2060920	EUR 160.-

Thermal insulation

Thermal insulation shell Yonos MAXO(-Z)

Thermal insulation shell Yonos MAXO(-Z) 40/0,5-12	2123373	EUR 25.80
---	---------	-----------

Electrical accessories

Pump control/interface module

Connect module Yonos MAXO

Wilo-Connect module Yonos MAXO	2210108	EUR 199,-
--------------------------------	---------	-----------



Data sheet

Hydraulic data

Maximum operating pressure P_N	10 bar
Min. fluid temperature for HVAC applications T_{min}	0 °C
Max. fluid temperature for HVAC T	80 °C
Min. ambient temperature T_{min}	0 °C
Max. ambient temperature T_{max}	40 °C
Max. permitted total water hardness	3.57 mmol/l (20°dH)

Motor data

Energy efficiency index (EEI) *	≤0,20
Mains connection	1~230 V, 50/60 Hz
Rated power P_2	0,67 kW
Rated current I_N	3,5 A
Min. speed n_{min}	800 1/min
Max. speed n_{max}	3500 1/min
Power consumption $P_{1 min}$	30 W
Power consumption $P_{1 max}$	800 W
Emitted interference	EN 61800-3;2004+A1;2012 /residential area (C1)
Interference resistance	EN 61800-3;2004+A1;2012 /industrial environment (C2)
Speed control	Frequency converter
Insulation class	F
Protection class motor	IPX4D
Motor protection	Internal protection overheating and overcurrent

* The benchmark for the most efficient circulators is EEI ≤ 0.20

Materials

Pump housing	Stainless steel
Impeller	PPS-GF40
Shaft	Stainless steel
Bearing	Carbon, synthetic resin-impregnated

Installation dimensions

Pipe connection on the suction side <i>DN_s</i>	DN 40
Pipe connection on the discharge side <i>DN_d</i>	DN 40
Port-to-port length <i>L₀</i>	250 mm

Equipment/function

Function

Control mode	Δp -v for variable differential pressure
	Δp -c for constant differential pressure
	Constant speed (3 speed stages)
Multi pump operation	Main/Standby (with Connect Module Yonos MAXO)
Display	Setpoint

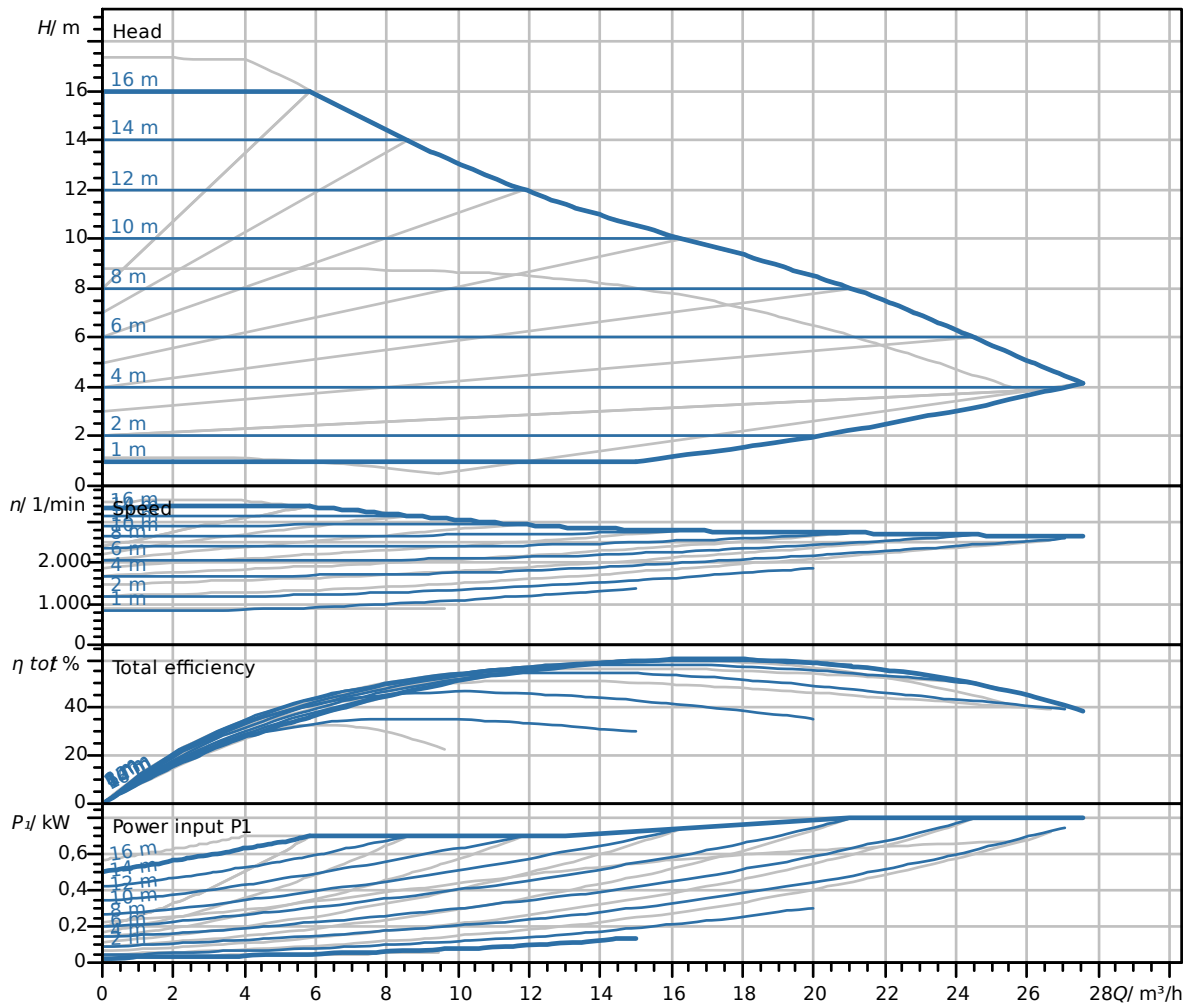
Equipment

Approvals and labels	CE
	VDE
	EAC
Display	LED segment display
Display information	Basic Version: LED display (small) for showing the set head or speed stage.
Pump control	Electronic-controlled pump
Quick electrical connection	Wilo plug

Connectivity

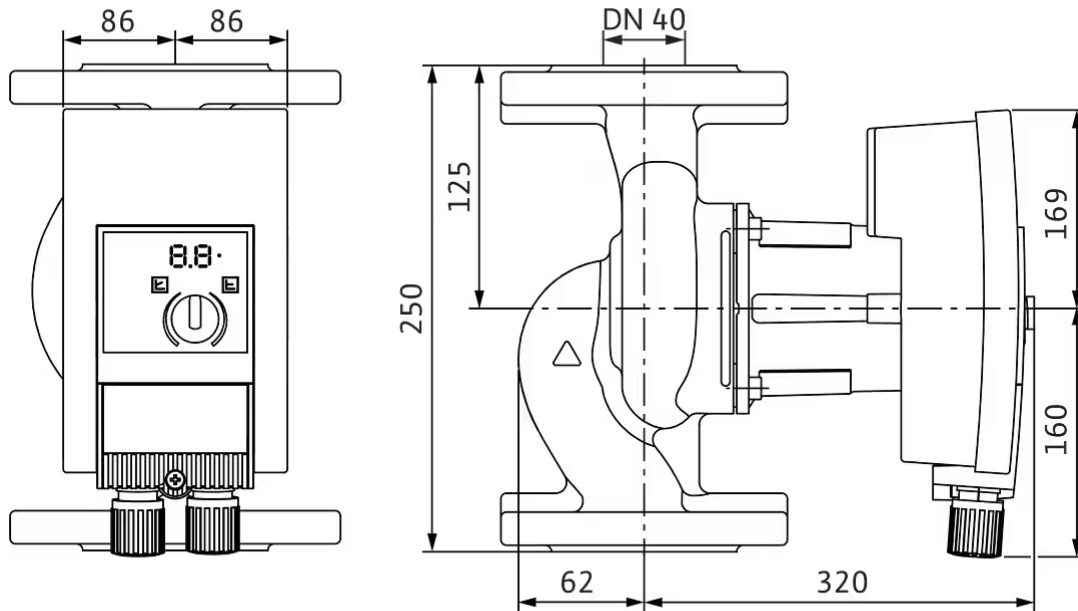
Digital input	Ext. OFF (via accessories Wilo-Connect module Yonos MAXO)
Digital output	SSM
	SSM/SBM (via accessories Connect module Yonos MAXO)

Pump curves



Dimensions and dimensions drawings

Yonos MAXO-Z 40/0,5-16 PN 6/10



Mechanical accessories

Pipe installation

Counter flange kit

DN 40, PN 6 counter flange kit	2105578	EUR 59.80
DN 40, PN 10 counter flange kit	2105579	EUR 74.-

Pipe installation, adapter fitting

Intermediate flange connecting piece F

Intermediate flange pieces F 1-MS, DN 40x30mm, PN 6	2060865	EUR 120.-
Intermediate flange pieces F 1-MS, DN 40x30mm, PN 10/16	2060920	EUR 160.-

Thermal insulation

Thermal insulation shell Yonos MAXO(-Z)

Thermal insulation shell Yonos MAXO(-Z) 40/0,5-16	2123374	EUR 29.90
---	---------	-----------

Electrical accessories

Pump control/interface module

Connect module Yonos MAXO

Wilo-Connect module Yonos MAXO	2210108	EUR 199,-
--------------------------------	---------	-----------



Data sheet

Hydraulic data

Maximum operating pressure P_N	10 bar
Min. fluid temperature for HVAC applications T_{min}	0 °C
Max. fluid temperature for HVAC T	80 °C
Min. ambient temperature T_{min}	0 °C
Max. ambient temperature T_{max}	40 °C
Max. permitted total water hardness	3.57 mmol/l (20°dH)

Motor data

Energy efficiency index (EEI) *	≤0,20
Mains connection	1~230 V, 50/60 Hz
Rated power P_2	0,4 kW
Rated current I_N	2,15 A
Min. speed n_{min}	950 1/min
Max. speed n_{max}	4100 1/min
Power consumption $P_{1 min}$	15 W
Power consumption $P_{1 max}$	490 W
Emitted interference	EN 61800-3;2004+A1;2012 /residential area (C1)
Interference resistance	EN 61800-3;2004+A1;2012 /industrial environment (C2)
Speed control	Frequency converter
Insulation class	F
Protection class motor	IPX4D
Motor protection	Internal protection overheating and overcurrent

* The benchmark for the most efficient circulators is EEI ≤ 0.20

Materials

Pump housing	Stainless steel
Impeller	PPS-GF40
Shaft	Stainless steel
Bearing	Carbon, synthetic resin-impregnated

Installation dimensions

Pipe connection on the suction side <i>DN_s</i>	DN 50
Pipe connection on the discharge side <i>DN_d</i>	DN 50
Port-to-port length <i>L₀</i>	280 mm

Equipment/function

Function

Control mode	Δp -v for variable differential pressure
	Δp -c for constant differential pressure
	Constant speed (3 speed stages)
Multi pump operation	Main/Standby (with Connect Module Yonos MAXO)
Display	Setpoint

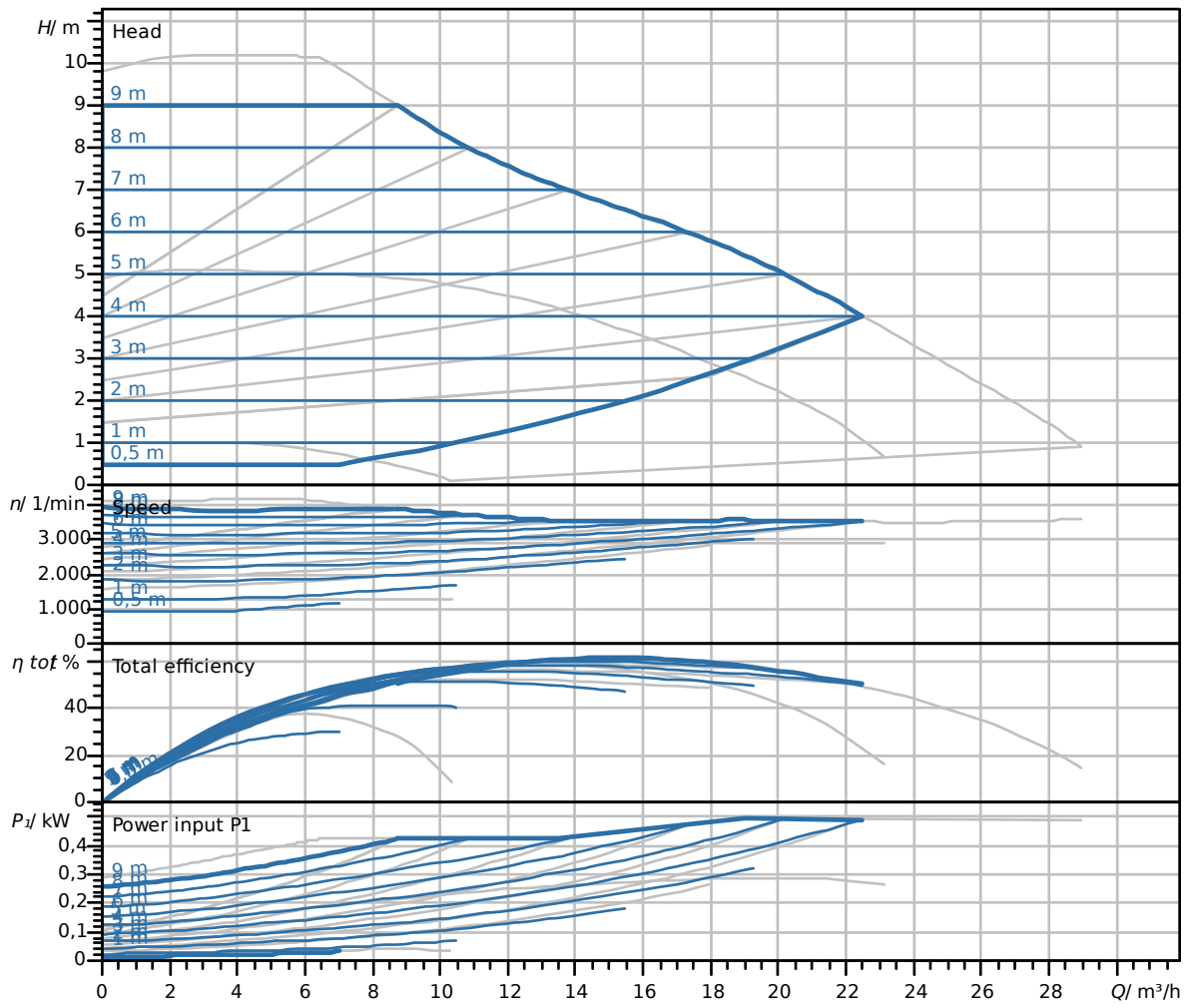
Equipment

Approvals and labels	CE
	VDE
	EAC
Display	LED segment display
Display information	Basic Version: LED display (small) for showing the set head or speed stage.
Pump control	Electronic-controlled pump
Quick electrical connection	Wilo plug

Connectivity

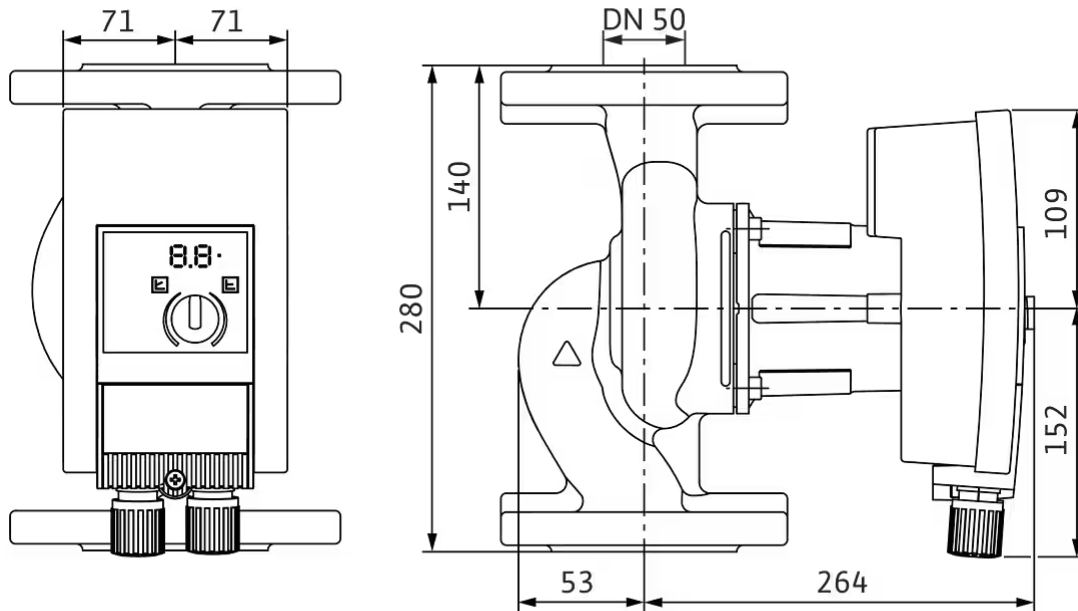
Digital input	Ext. OFF (via accessories Wilo-Connect module Yonos MAXO)
Digital output	SSM
	SSM/SBM (via accessories Connect module Yonos MAXO)

Pump curves



Dimensions and dimensions drawings

Yonos MAXO-Z 50/0,5-9 PN 6/10



Mechanical accessories

Pipe installation

Counter flange kit

DN 50, PN 6 counter flange kit	2105580	EUR 68,-
DN 50, PN 10 counter flange kit	2105581	EUR 87,-

Thermal insulation

Thermal insulation shell Yonos MAXO(-Z)

Thermal insulation shell Yonos MAXO(-Z) 50/0,5-9(12)	2123376	EUR 28.90
--	---------	-----------

Electrical accessories

Pump control/interface module

Connect module Yonos MAXO

Wilo-Connect module Yonos MAXO	2210108	EUR 199,-
--------------------------------	---------	-----------



Data sheet

Hydraulic data

Maximum operating pressure P_N	10 bar
Min. fluid temperature for HVAC applications T_{min}	0 °C
Max. fluid temperature for HVAC T	80 °C
Min. ambient temperature T_{min}	0 °C
Max. ambient temperature T_{max}	40 °C
Max. permitted total water hardness	3.57 mmol/l (20°dH)

Motor data

Energy efficiency index (EEI) *	≤0,20
Mains connection	1~230 V, 50/60 Hz
Rated power P_2	1,05 kW
Rated current I_N	5,5 A
Min. speed n_{min}	800 1/min
Max. speed n_{max}	3300 1/min
Power consumption $P_{1 min}$	40 W
Power consumption $P_{1 max}$	1250 W
Emitted interference	EN 61800-3;2004+A1;2012 /residential area (C1)
Interference resistance	EN 61800-3;2004+A1;2012 /industrial environment (C2)
Speed control	Frequency converter
Insulation class	F
Protection class motor	IPX4D
Motor protection	Internal protection overheating and overcurrent

* The benchmark for the most efficient circulators is EEI ≤ 0.20

Materials

Pump housing	Stainless steel
Impeller	PPS-GF40
Shaft	Stainless steel
Bearing	Carbon, synthetic resin-impregnated

Installation dimensions

Pipe connection on the suction side <i>DN_s</i>	DN 50
Pipe connection on the discharge side <i>DN_d</i>	DN 50
Port-to-port length <i>L₀</i>	340 mm

Equipment/function

Function

Control mode	Δp -v for variable differential pressure
	Δp -c for constant differential pressure
	Constant speed (3 speed stages)
Multi pump operation	Main/Standby (with Connect Module Yonos MAXO)
Display	Setpoint

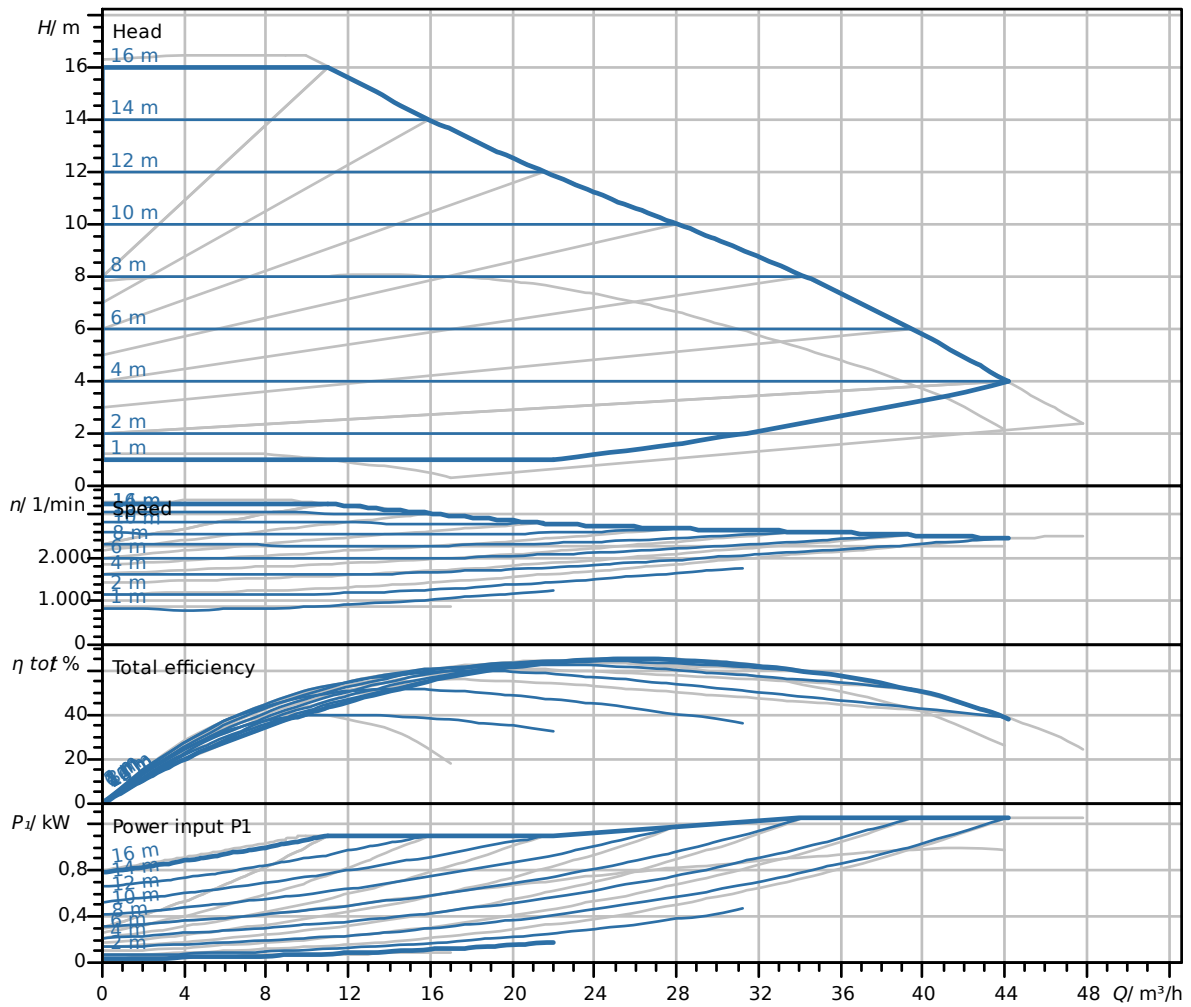
Equipment

Approvals and labels	CE
	VDE
	EAC
Display	LED segment display
Display information	Basic Version: LED display (small) for showing the set head or speed stage.
Pump control	Electronic-controlled pump
Quick electrical connection	Wilo plug

Connectivity

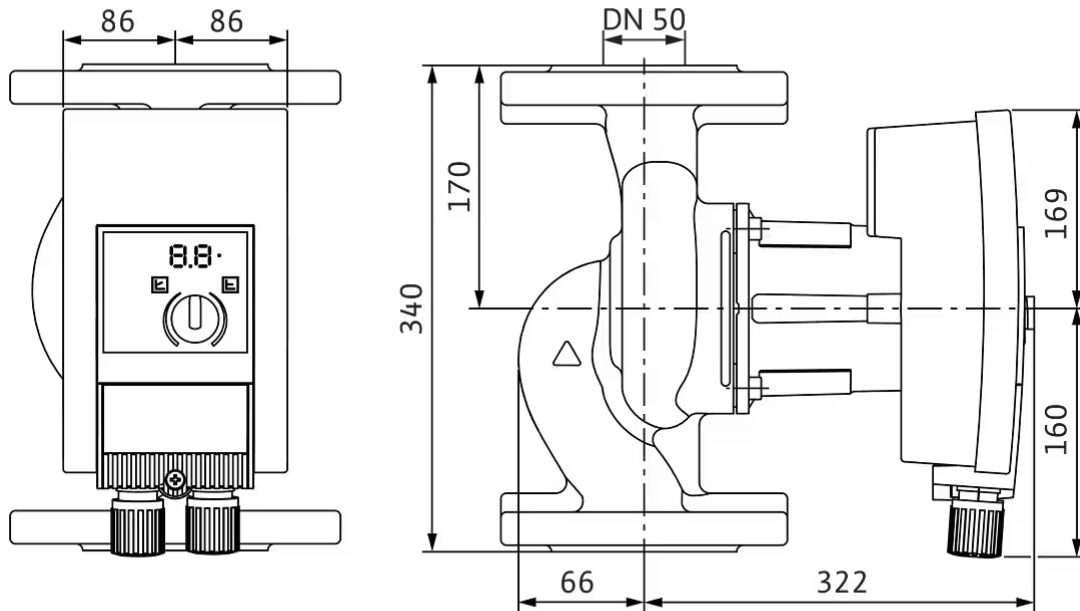
Digital input	Ext. OFF (via accessories Wilo-Connect module Yonos MAXO)
Digital output	SSM
	SSM/SBM (via accessories Connect module Yonos MAXO)

Pump curves



Dimensions and dimensions drawings

Yonos MAXO-Z 50/0,5-16 PN 6/10



Mechanical accessories

Pipe installation

Counter flange kit

DN 50, PN 6 counter flange kit	2105580	EUR 68.-
DN 50, PN 10 counter flange kit	2105581	EUR 87.-

Thermal insulation

Thermal insulation shell Yonos MAXO(-Z)

Thermal insulation shell Yonos MAXO(-Z) 50/0,5-16	2153140	EUR 30.-
---	---------	----------

Electrical accessories

Pump control/interface module

Connect module Yonos MAXO

Wilo-Connect module Yonos MAXO	2210108	EUR 199.-
--------------------------------	---------	-----------



Data sheet

Hydraulic data

Maximum operating pressure P_N	10 bar
Min. fluid temperature for HVAC applications T_{min}	0 °C
Max. fluid temperature for HVAC T	80 °C
Min. ambient temperature T_{min}	0 °C
Max. ambient temperature T_{max}	40 °C
Max. permitted total water hardness	3.57 mmol/l (20°dH)

Motor data

Energy efficiency index (EEI) *	≤0,20
Mains connection	1~230 V, 50/60 Hz
Rated power P_2	0,67 kW
Rated current I_N	3,5 A
Min. speed n_{min}	800 1/min
Max. speed n_{max}	2800 1/min
Power consumption $P_{1 min}$	40 W
Power consumption $P_{1 max}$	800 W
Emitted interference	EN 61800-3;2004+A1;2012 /residential area (C1)
Interference resistance	EN 61800-3;2004+A1;2012 /industrial environment (C2)
Speed control	Frequency converter
Insulation class	F
Protection class motor	IPX4D
Motor protection	Internal protection overheating and overcurrent

* The benchmark for the most efficient circulators is EEI ≤ 0.20

Materials

Pump housing	Stainless steel
Impeller	PPS-GF40
Shaft	Stainless steel
Bearing	Carbon, synthetic resin-impregnated

Installation dimensions

Pipe connection on the suction side <i>DN_s</i>	DN 65
Pipe connection on the discharge side <i>DN_d</i>	DN 65
Port-to-port length <i>L₀</i>	340 mm

Equipment/function

Function

Control mode	Δp -v for variable differential pressure
	Δp -c for constant differential pressure
	Constant speed (3 speed stages)
Multi pump operation	Main/Standby (with Connect Module Yonos MAXO)
Display	Setpoint

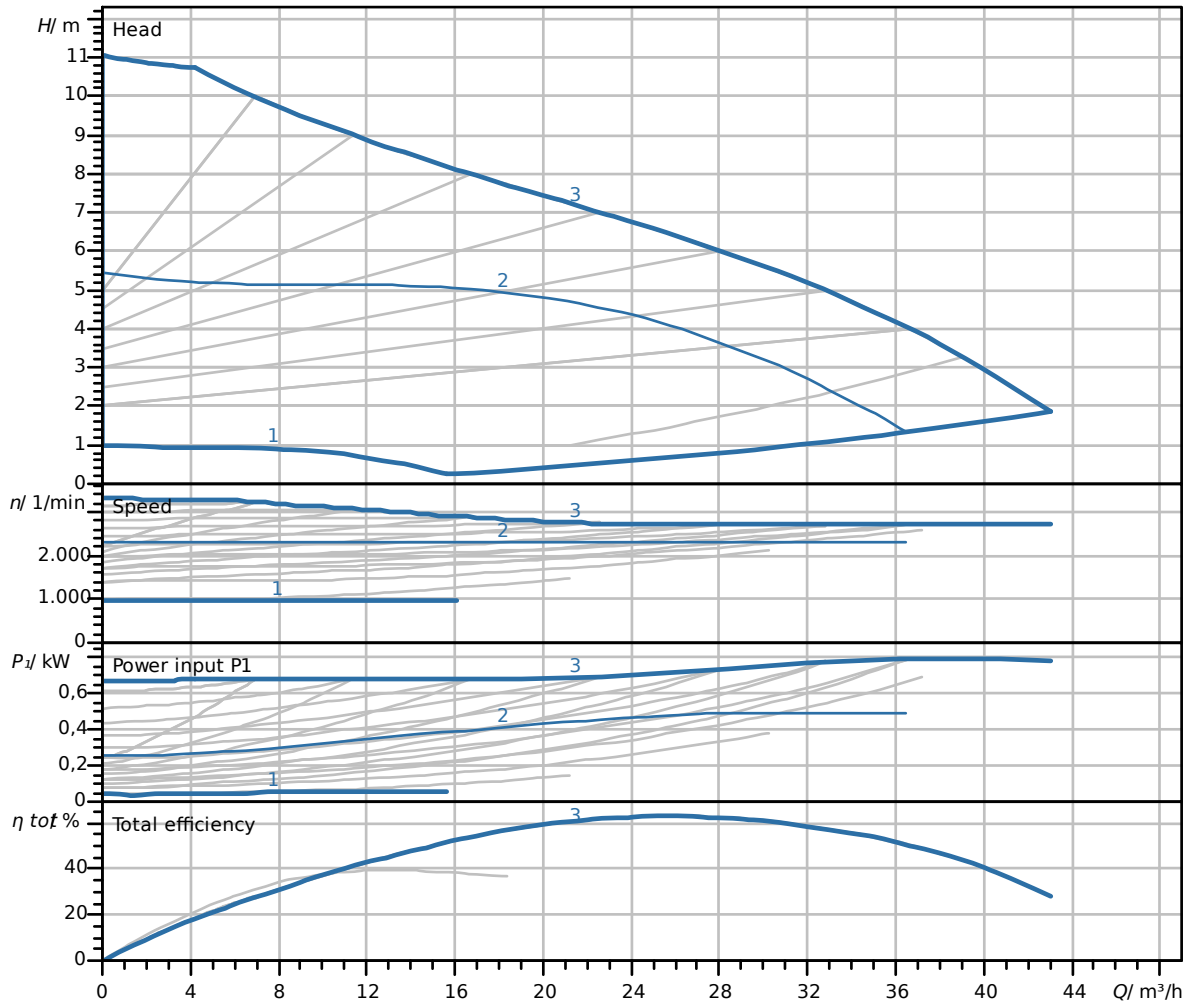
Equipment

Approvals and labels	CE
	VDE
	EAC
Display	LED segment display
Display information	Basic Version: LED display (small) for showing the set head or speed stage.
Pump control	Electronic-controlled pump
Quick electrical connection	Wilo plug

Connectivity

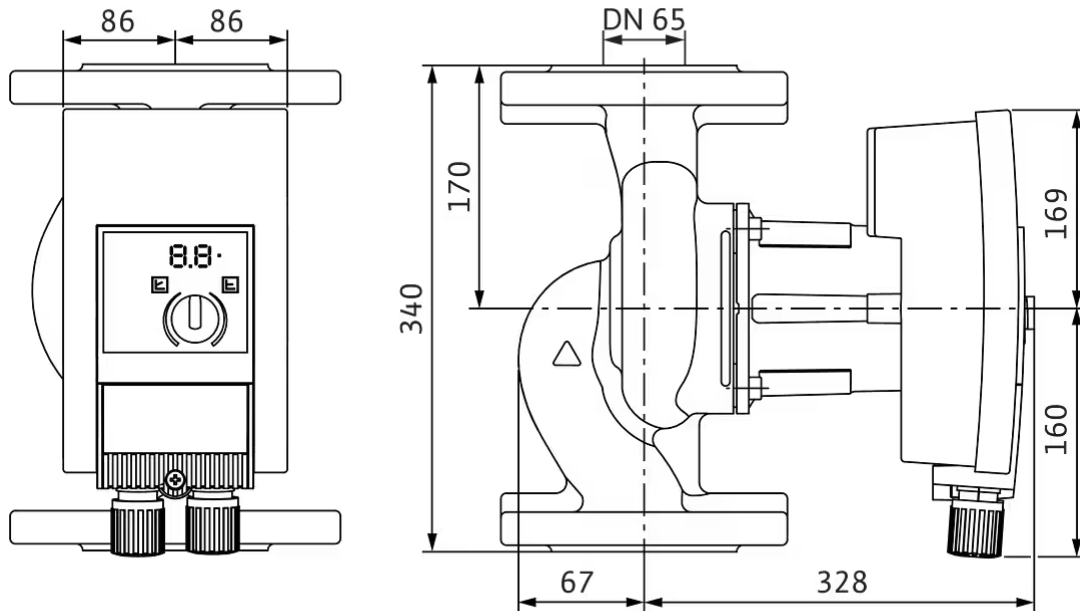
Digital input	Ext. OFF (via accessories Wilo-Connect module Yonos MAXO)
Digital output	SSM
	SSM/SBM (via accessories Connect module Yonos MAXO)

Pump curves



Dimensions and dimensions drawings

Yonos MAXO-Z 65/0,5-12 PN 6/10



Mechanical accessories

Pipe installation

Counter flange kit

DN 65, PN 6 counter flange kit	2105582	EUR 83.-
DN 65, PN 10 counter flange kit	2105583	EUR 102.-

Electrical accessories

Pump control/interface module

Connect module Yonos MAXO

Wilo-Connect module Yonos MAXO	2210108	EUR 199.-
--------------------------------	---------	-----------



Data sheet

Hydraulic data

Maximum operating pressure P_N	10 bar
Min. fluid temperature for HVAC applications T_{min}	0 °C
Max. fluid temperature for HVAC T	80 °C
Min. ambient temperature T_{min}	0 °C
Max. ambient temperature T_{max}	40 °C
Max. permitted total water hardness	3.57 mmol/l (20°dH)

Motor data

Energy efficiency index (EEI) *	≤0,20
Mains connection	1~230 V, 50/60 Hz
Rated power P_2	1,22 kW
Rated current I_N	6,4 A
Min. speed n_{min}	800 1/min
Max. speed n_{max}	3400 1/min
Power consumption $P_{1 min}$	40 W
Power consumption $P_{1 max}$	1450 W
Emitted interference	EN 61800-3;2004+A1;2012 /residential area (C1)
Interference resistance	EN 61800-3;2004+A1;2012 /industrial environment (C2)
Speed control	Frequency converter
Insulation class	F
Protection class motor	IPX4D
Motor protection	Internal protection overheating and overcurrent

* The benchmark for the most efficient circulators is EEI ≤ 0.20

Materials

Pump housing	Stainless steel
Impeller	PPS-GF40
Shaft	Stainless steel
Bearing	Carbon, synthetic resin-impregnated

Installation dimensions

Pipe connection on the suction side <i>DN_s</i>	DN 65
Pipe connection on the discharge side <i>DN_d</i>	DN 65
Port-to-port length <i>L₀</i>	340 mm

Equipment/function

Function

Control mode	Δp -v for variable differential pressure
	Δp -c for constant differential pressure
	Constant speed (3 speed stages)
Multi pump operation	Main/Standby (with Connect Module Yonos MAXO)
Display	Setpoint

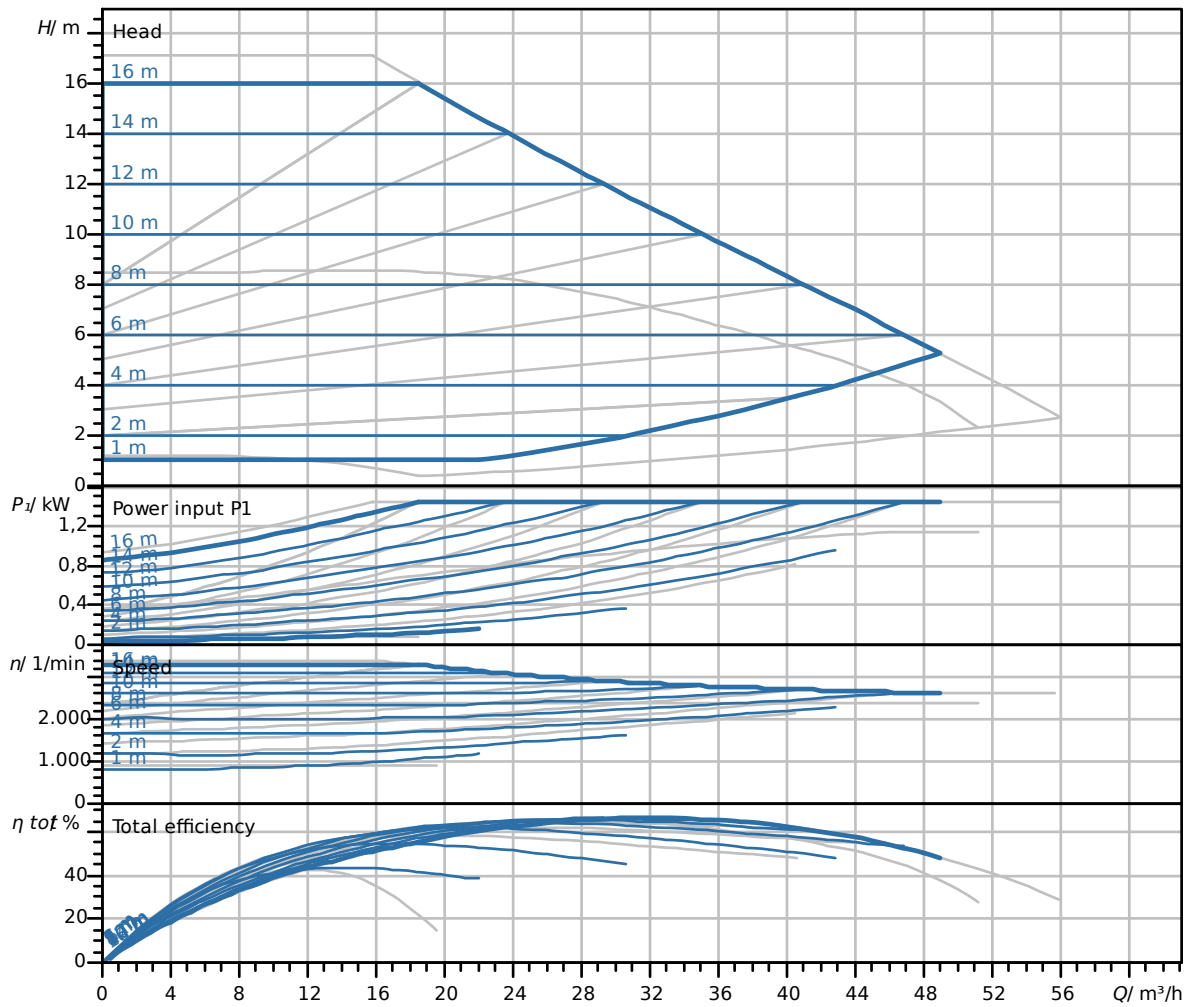
Equipment

Approvals and labels	CE
	VDE
	EAC
Display	LED segment display
Display information	Basic Version: LED display (small) for showing the set head or speed stage.
Pump control	Electronic-controlled pump
Quick electrical connection	Wilo plug

Connectivity

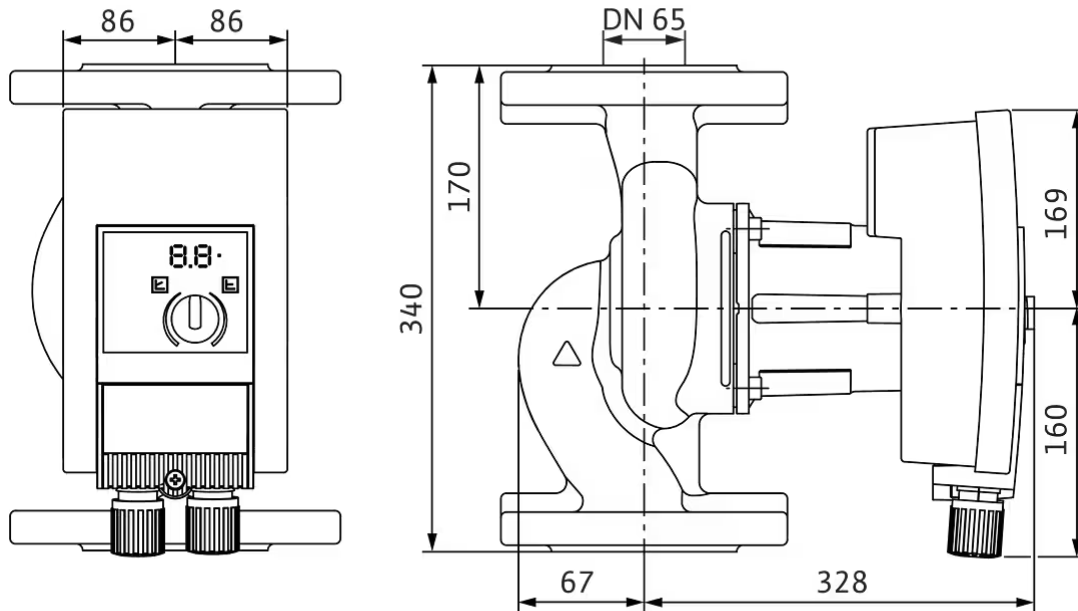
Digital input	Ext. OFF (via accessories Wilo-Connect module Yonos MAXO)
Digital output	SSM
	SSM/SBM (via accessories Connect module Yonos MAXO)

Pump curves



Dimensions and dimensions drawings

Yonos MAXO-Z 65/0,5-16 PN 6/10



Mechanical accessories

Pipe installation

Counter flange kit

DN 65, PN 6 counter flange kit	2105582	EUR 83.-
DN 65, PN 10 counter flange kit	2105583	EUR 102.-

Thermal insulation

Thermal insulation shell Yonos MAXO(-Z)

Thermal insulation shell Yonos MAXO(-Z) 65/0,5-12(16)	2153139	EUR 30.-
---	---------	----------

Electrical accessories

Pump control/interface module

Connect module Yonos MAXO

Wilo-Connect module Yonos MAXO	2210108	EUR 199.-
--------------------------------	---------	-----------

Pioneering for You

wilo

WILO SE
Wilopark 1
44263 Dortmund
Germany
T +49 231 4102-0
F +49 231 4102-7363
wilo@wilo.com
www.wilo.com

More contact details at www.wilo.com